

AmericanOilman.com  
2023

Weekly Natural Gas Storage Report

Updated to week ending 4/14/2023

All years have been updated to EIA estimates for the five-region structure. The five-region structure was introduced Nov. 6, 2015.

AmericanOilman	2018			2019			2020			2021			2022			2023		5 Yr. Avg. Withdrawal or Build	5 Yr. Avg. Storage	Release Date - Closing Gas Price Henry Hub Spot		
	Week End	Wdwl / Bld	BCF	Week End	Wdwl / Bld	BCF	Week End	Wdwl / Bld	BCF	Week End	Wdwl / Bld	BCF	Week End	Wdwl / Bld	BCF	Wdwl / Bld	BCF				Week Ending	Data Released
correction week				12-28		-20	2705															
WEEK 1	12-29	-206	3126	1-4	-91	2614	1-3	-44	3148	1-1	-130	3330	12-31	-31	3195	-221	2891	30-Dec-22	05-Jan-22	-100	3083	\$ 3.78
WEEK 2	1-5	-359	2767	1/11	-81	2533	1/10	-109	3039	1-8	-134	3196	1-7	-179	3016	11	2902	06-Jan-23	12-Jan-22	-172	2910	\$ 3.47
WEEK 3	1-12	-183	2584	1-18	-163	2370	1-17	-92	2947	1-15	-187	3009	1-14	-206	2810	-82	2820	13-Jan-23	19-Jan-22	-166	2744	\$ 3.15
WEEK 4	1-19	-288	2296	1-25	-173	2197	1-24	-201	2746	1-22	-128	2881	1-21	-219	2591	-86	2734	20-Jan-23	26-Jan-22	-202	2542	\$ 2.72
WEEK 5	1-26	-99	2197	2-1	-237	1960	1-31	-137	2609	1-22	-192	2689	1-28	-268	2323	-151	2583	27-Jan-23	02-Feb-22	-187	2356	\$ 2.67
WEEK 6	2-2	-119	2078	2-8	-78	1882	2-7	-115	2494	2-5	-171	2518	2-4	-222	2101	-217	2366	03-Feb-23	09-Feb-22	-141	2215	\$ 2.40
WEEK 7	2-9	-194	1884	2-15	-177	1705	2-14	-151	2343	2-12	-237	2281	2-11	-190	1911	-100	2266	10-Feb-23	16-Feb-22	-190	2025	\$ 2.48
WEEK 8	2-16	-124	1760	2-22	-166	1539	2-21	-143	2200	2-19	-338	1943	2-18	-129	1782	-71	2195	17-Feb-23	23-Feb-22	-180	1845	\$ 2.17
WEEK 9	2-23	-78	1682	3-1	-149	1390	2-28	-109	2091	2-26	-98	1845	2-25	-139	1643	-81	2114	24-Feb-23	02-Mar-22	-115	1730	\$ 2.67
WEEK 10	3-2	-57	1625	3-8	-200	1190	3-6	-48	2043	3-5	-52	1793	3-4	-124	1519	-84	2030	03-Mar-23	09-Mar-22	-96	1634	\$ 2.50
WEEK 11	3-9	-93	1532	3-15	-47	1143	3-13	-9	2034	3-12	-11	1782	3-11	-79	1440	-58	1972	10-Mar-23	16-Mar-22	-48	1586	\$ 2.45
WEEK 12	3-16	-86	1446	3-22	-36	1107	3-20	-29	2005	3-19	-32	1750	3-18	-51	1389	-72	1900	17-Mar-23	23-Mar-22	-47	1539	\$ 2.08
WEEK 13	3-23	-63	1383	3-29	23	1130	3-27	-19	1986	3-26	14	1764	3-25	26	1415	-47	1853	24-Mar-23	30-Mar-22	-4	1536	\$ 1.95
WEEK 14	3-30	-29	1354	4-5	25	1155	4-3	38	2024	4-2	20	1784	4-1	-33	1382	-23	1830	31-Mar-23	06-Apr-22	4	1540	\$ 2.18
WEEK 15	4-6	-19	1335	4-12	92	1247	4-10	73	2097	4-9	61	1845	4-8	15	1397	25	1855	07-Apr-23	13-Apr-22	44	1584	\$ 2.04
WEEK 16	4-13	-36	1299	4-19	92	1339	4-17	43	2140	4-16	38	1883	4-15	53	1450	75	1930	14-Apr-23	20-Apr-22	38	1622	
WEEK 17	4-20	-18	1281	4-26	123	1462	4-24	70	2210	4-23	15	1898	4-22	40	1490			21-Apr-23	27-Apr-22	46	1668	
WEEK 18	4-27	62	1343	5-3	85	1547	5-1	109	2319	4-30	60	1958	4-29	77	1567			28-Apr-23	04-May-22	79	1747	
WEEK 19	5-4	89	1432	5-10	106	1653	5-8	103	2422	5-7	71	2029	5-6	76	1643			05-May-23	11-May-22	89	1836	
WEEK 20	5-11	106	1538	5-17	100	1753	5-15	81	2503	5-14	71	2100	5-13	89	1732			12-May-23	18-May-22	89	1925	
WEEK 21	5-18	91	1629	5-24	114	1867	5-22	109	2612	5-21	115	2215	5-20	80	1812			19-May-23	25-May-22	102	2027	
WEEK 22	5-25	96	1725	5-31	119	1986	5-29	102	2714	5-28	98	2313	5-27	90	1902			26-May-23	01-Jun-22	101	2128	
WEEK 23	6-1	92	1817	6-7	102	2088	6-5	93	2807	6-4	98	2411	6-3	101	2003			02-Jun-23	08-Jun-22	97	2225	
WEEK 24	6-08	96	1913	6-14	115	2203	6-12	85	2892	6-11	16	2427	6-10	92	2095			09-Jun-23	15-Jun-22	81	2306	
WEEK 25	6-15	95	2008	6-21	98	2301	6-19	120	3012	6-18	55	2482	6-17	74	2169			16-Jun-23	22-Jun-22	88	2394	
WEEK 26	6-22	66	2074	6-28	89	2390	6-26	65	3077	6-25	76	2558	6-24	82	2251			23-Jun-23	29-Jun-22	76	2470	
WEEK 27	6-29	78	2152	7-5	81	2471	7-3	56	3133	7-2	16	2574	7-1	60	2311			30-Jun-23	06-Jul-22	58	2528	
WEEK 28	7-6	51	2203	7-12	62	2533	7-10	45	3178	7-9	55	2629	7-8	58	2369			07-Jul-23	13-Jul-22	54	2582	
WEEK 29	7-13	46	2249	7-19	36	2569	7-17	37	3215	7-16	49	2678	7-15	32	2401			14-Jul-23	20-Jul-22	40	2622	
WEEK 30	7-20	24	2273	7-26	65	2634	7-24	26	3241	7-23	36	2714	7-22	15	2416			21-Jul-23	27-Jul-22	33	2656	
WEEK 31	7-27	35	2308	8-2	55	2689	7-31	33	3274	7-30	13	2727	7-29	41	2457			28-Jul-23	03-Aug-22	35	2691	
WEEK 32	8-3	46	2354	8-9	49	2738	8-7	58	3332	8-6	49	2776	8-5	44	2501			04-Aug-23	10-Aug-22	49	2740	
WEEK 33	8-10	33	2387	8-16	59	2797	8-14	43	3375	8-13	46	2822	8-12	18	2519			11-Aug-23	17-Aug-22	40	2780	
WEEK 34	8-17	48	2435	8-30	60	2857	8-21	45	3420	8-20	29	2851	8-19	60	2579			18-Aug-23	24-Aug-22	48	2828	
WEEK 35	8-24	70	2505	8-30	84	2941	8-28	35	3455	8-27	20	2871	8-26	61	2640			25-Aug-23	31-Aug-22	54	2882	
WEEK 36	8-31	62	2567	9-6	78	3019	9-4	70	3525	9-3	52	2923	9-2	54	2694			01-Sep-23	07-Sep-22	63	2946	
WEEK 37	9-7	69	2636	9-13	84	3103	9-11	89	3614	9-10	83	3006	9-9	77	2771			08-Sep-23	14-Sep-22	80	3026	
WEEK 38	9-14	86	2722	9-20	102	3205	9-18	66	3680	9-17	76	3082	9-16	103	2874			15-Sep-23	21-Sep-22	87	3113	
WEEK 39	9-21	46	2768	9-27	112	3317	9-25	76	3756	9-24	88	3170	9-23	103	2977			22-Sep-23	28-Sep-22	85	3198	
WEEK 40	9-28	98	2866	10-04	98	3415	10-02	75	3831	10-1	118	3288	9-30	129	3106			29-Sep-23	05-Oct-22	104	3301	
WEEK 41	10-5	90	2956	10-18	104	3519	10-9	46	3877	10-8	81	3369	10-7	125	3231			06-Oct-23	12-Oct-22	89	3390	
WEEK 42	10-12	81	3037	10-18	87	3606	10-16	49	3926	10-15	92	3461	10-14	111	3342			13-Oct-23	19-Oct-22	84	3474	
WEEK 43	10-19	58	3095	10-25	89	3695	10-23	29	3955	10-22	87	3548	10-21	52	3394			20-Oct-23	26-Oct-22	63	3537	
WEEK 44	10-26	48	3143	11-1	34	3729	10-30	-36	3919	10-29	63	3611	10-28	107	3501			27-Oct-23	02-Nov-22	43	3581	
WEEK 45	11-2	65	3208	11-8	3	3732	11-6	8	3927	11-05	7	3618	11-04	79	3580			03-Nov-23	09-Nov-22	32	3613	
WEEK 46	11-9	39	3247	11-15	-94	3638	11-13	31	3958	11-12	26	3644	11-11	64	3644			10-Nov-23	16-Nov-22	13	3626	
WEEK 47	11-16	-134	3113	11-22	-28	3610	11-20	-18	3940	11-19	-21	3623	11-18	-80	3564			17-Nov-23	23-Nov-22	-56	3570	
WEEK 48	11-23	-59	3054	11-29	-19	3591	11-27	-1	3939	11-26	-59	3564	11-25	-81	3483			24-Nov-23	01-Dec-22	-44	3526	
WEEK 49	11-30	-63	2991	12-6	-73	3518	12-4	-91	3848	12-3	-59	3505	12-2	-21	3462			01-Dec-23	08-Dec-22	-61	3465	
WEEK 50	12-7	-77	2914	12-13	-107	3411	12-11	-122	3726	12-10	-88	3417	12-9	-50	3412			08-Dec-23	15-Dec-22	-89	3376	
WEEK 51	12-14	-141	2773	12-20	-161	3250	12-18	-152	3574	12-17	-55	3362	12-16	-87	3325			15-Dec-23	22-Dec-22	-119	3257	
WEEK 52	12-21	-48	2725	12-27	-58	3192	12-25	-114	3460	12-24	-136	3226	12-23	-213	3112			22-Dec-23	29-Dec-22	-114	3143	

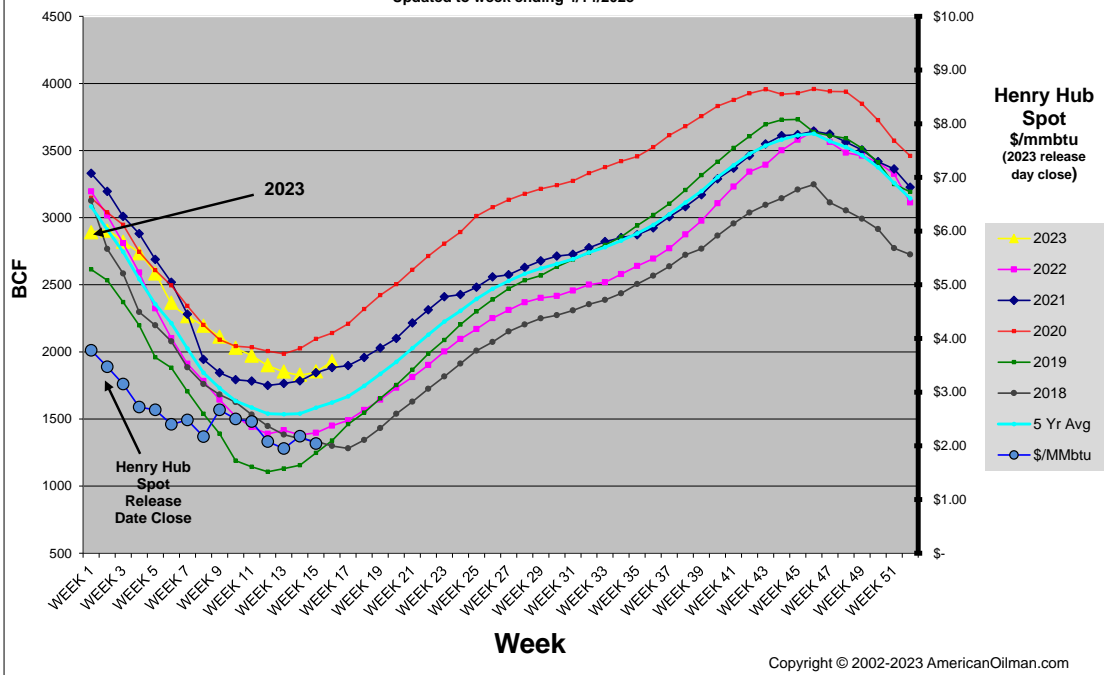
- Revised Value

Copyright © 2002-2023 AmericanOilman

**NOTE:** The historical data above is from the Weekly Natural Gas Storage database as reported by the EIA (Energy Information Administration). AmericanOilman compares the weekly values of the current year with the same week values of the previous five years. AmericanOilman does not interpolate the values of past years so that the exact day of each week is compared with the exact day of the current year. This way, you get to see the actual value that was reported for a particular week in the past five years. The EIA uses daily linear interpolations of the working gas inventory values between each reported week (constructing an interpolated value for every day of the year). This is why the EIA "year ago" values, and the "average" values do not match with AmericanOilman's listed values. \*\*\*Since the "Week End" report date loses approximately one day for each additional year, the chart will be corrected by shifting the "Week End" date by one week forward every five years. This is done so the same (approximate) week of the year is compared year to year. The correction week or "Week 0" can be compared to the "before or after" week from the previous year. Years of correction 2014, 2019, 2024, 2029.

### AmericanOilman Natural Gas Weekly Storage 5 yr. Compare

2023  
Updated to week ending 4/14/2023



Copyright © 2002-2023 AmericanOilman.com