

# AmericanOilman.com 2021

## Weekly Natural Gas Storage Report Updated to week ending 10/29/2021

All years have been updated to EIA estimates for the five-region structure. The five-region structure was introduced Nov. 6, 2015.

AmericanOilman	2016			2017			2018			2019			2020			2021		5 Yr. Avg. Withdrawal or Build	5 Yr. Avg. Storage	Release Date - Closing Gas Price Henry Hub Spot		
	Week End	Wdwl / Bld	BCF	Week End	Wdwl / Bld	BCF	Week End	Wdwl / Bld	BCF	Week End	Wdwl / Bld	BCF	Week End	Wdwl / Bld	BCF	Wdwl / Bld	BCF				Week Ending	Data Released
correction week																						
WEEK 1	1-1	-113	3643	12-30	-49	3311	12-29	-206	3126	1-4	-91	2614	1-3	-44	3148	-130	3330	01-Jan-21	07-Jan-21	-101	3168	\$ 2.81
WEEK 2	1-8	-168	3475	1-6	-151	3160	1-5	-359	2767	1/11	-81	2533	1/10	-109	3039	-134	3196	08-Jan-21	14-Jan-21	-174	2995	\$ 2.86
WEEK 3	1-15	-178	3297	1-13	-243	2917	1-12	-183	2584	1-18	-163	2370	1-17	-92	2947	-187	3009	15-Jan-21	20-Jan-21	-172	2823	\$ 2.57
WEEK 4	1-22	-211	3086	1-20	-119	2798	1-19	-288	2296	1-25	-173	2197	1-24	-201	2746	-128	2881	22-Jan-21	28-Jan-21	-198	2625	\$ 2.76
WEEK 5	1-29	-152	2934	1-27	-87	2711	1-26	-99	2197	2-1	-237	1960	1-31	-137	2609	-192	2689	29-Jan-21	04-Feb-21	-142	2482	\$ 2.99
WEEK 6	2-5	-70	2864	2-3	-152	2559	2-2	-119	2078	2-8	-78	1882	2-7	-115	2494	-171	2518	05-Feb-21	11-Feb-21	-107	2375	\$ 6.50
WEEK 7	2-12	-163	2701	2-10	-114	2445	2-9	-194	1884	2-15	-177	1705	2-14	-151	2343	-237	2281	12-Feb-21	18-Feb-21	-160	2216	\$ 8.56
WEEK 8	2-19	-117	2584	2-17	-89	2356	2-16	-124	1760	2-22	-166	1539	2-21	-143	2200	-338	1943	19-Feb-21	25-Feb-21	-128	2088	\$ 2.72
WEEK 9	2-26	-48	2536	2-24	7	2363	2-23	-78	1682	3-1	-149	1390	2-28	-109	2091	-98	1845	26-Feb-21	04-Mar-21	-75	2012	\$ 2.79
WEEK 10	3-4	-57	2479	3-3	-68	2295	3-2	-57	1625	3-8	-200	1190	3-6	-48	2043	-52	1793	05-Mar-21	11-Mar-21	-86	1926	\$ 2.70
WEEK 11	3-11	-1	2478	3-10	-53	2242	3-9	-93	1532	3-15	-47	1143	3-13	-9	2034	-11	1782	12-Mar-21	18-Mar-21	-41	1886	\$ 2.45
WEEK 12	3-18	15	2493	3-17	-150	2092	3-16	-86	1446	3-22	-36	1107	3-20	-29	2005	-32	1750	19-Mar-21	25-Mar-21	-57	1829	\$ 2.52
WEEK 13	3-25	-25	2468	3-24	-43	2049	3-23	-63	1383	3-29	23	1130	3-27	-19	1986	14	1764	26-Mar-21	01-Apr-21	-25	1803	\$ 2.52
WEEK 14	4-1	12	2480	3-31	2	2051	3-30	-29	1354	4-5	25	1155	4-3	38	2024	20	1784	02-Apr-21	08-Apr-21	10	1813	\$ 2.47
WEEK 15	4-8	-3	2477	4-7	10	2061	4-6	-19	1335	4-12	92	1247	4-10	73	2097	61	1845	09-Apr-21	15-Apr-21	31	1843	\$ 2.62
WEEK 16	4-15	7	2484	4-14	54	2115	4-13	-36	1299	4-19	92	1339	4-17	43	2140	38	1883	16-Apr-21	22-Apr-21	32	1875	\$ 2.77
WEEK 17	4-22	73	2557	4-21	74	2189	4-20	-18	1281	4-26	123	1462	4-24	70	2210	15	1898	23-Apr-21	29-Apr-21	64	1940	\$ 2.91
WEEK 18	4-29	68	2625	4-28	67	2256	4-27	62	1343	5-3	85	1547	5-1	109	2319	60	1958	30-Apr-21	06-May-21	78	2018	\$ 2.90
WEEK 19	5-6	56	2681	5-5	45	2301	5-4	89	1432	5-10	106	1653	5-8	103	2422	71	2029	07-May-21	13-May-21	80	2098	\$ 2.95
WEEK 20	5-13	73	2754	5-12	68	2369	5-11	106	1538	5-17	100	1753	5-15	81	2503	71	2100	14-May-21	20-May-21	86	2183	\$ 2.86
WEEK 21	5-20	71	2825	5-19	75	2444	5-18	91	1629	5-24	114	1867	5-22	109	2612	115	2215	21-May-21	27-May-21	92	2275	\$ 2.85
WEEK 22	5-27	82	2907	5-26	81	2525	5-25	96	1725	5-31	119	1986	5-29	102	2714	98	2313	28-May-21	03-Jun-21	96	2371	\$ 3.01
WEEK 23	6-3	65	2972	6-2	106	2631	6-1	92	1817	6-7	102	2088	6-5	93	2807	98	2411	04-Jun-21	10-Jun-21	92	2463	\$ 3.13
WEEK 24	6-10	69	3041	6-09	78	2709	6-08	96	1913	6-14	115	2203	6-12	85	2892	16	2427	11-Jun-21	17-Jun-21	89	2552	\$ 3.24
WEEK 25	6-17	62	3103	6-16	61	2770	6-15	95	2008	6-21	98	2301	6-19	120	3012	55	2482	18-Jun-21	24-Jun-21	87	2639	\$ 3.30
WEEK 26	6-24	37	3140	6-23	46	2816	6-22	66	2074	6-28	89	2390	6-26	65	3077	76	2558	25-Jun-21	01-Jul-21	61	2699	\$ 3.76
WEEK 27	7-1	39	3179	6-30	72	2888	6-29	78	2152	7-5	81	2471	7-3	56	3133	16	2574	02-Jul-21	08-Jul-21	65	2765	\$ 3.56
WEEK 28	7-8	64	3243	7-7	57	2945	7-6	51	2203	7-12	62	2533	7-10	45	3178	55	2629	09-Jul-21	15-Jul-21	56	2820	\$ 3.68
WEEK 29	7-15	34	3277	7-14	28	2973	7-13	46	2249	7-19	36	2569	7-17	37	3215	49	2678	16-Jul-21	22-Jul-21	36	2857	\$ 4.02
WEEK 30	7-22	17	3294	7-21	17	2990	7-20	24	2273	7-26	65	2634	7-24	26	3241	36	2714	23-Jul-21	29-Jul-21	30	2886	\$ 4.03
WEEK 31	7-29	-6	3288	7-28	20	3010	7-27	35	2308	8-2	55	2689	7-31	33	3274	13	2727	30-Jul-21	05-Aug-21	27	2914	\$ 4.27
WEEK 32	8-5	29	3317	8-4	19	3029	8-3	46	2354	8-9	49	2738	8-7	58	3332	49	2776	06-Aug-21	12-Aug-21	40	2954	\$ 4.10
WEEK 33	8-12	22	3339	8-11	53	3082	8-10	33	2387	8-16	59	2797	8-14	43	3375	46	2822	13-Aug-21	19-Aug-21	42	2996	\$ 3.83
WEEK 34	8-19	11	3350	8-18	43	3125	8-17	48	2435	8-30	60	2857	8-21	45	3420	29	2851	20-Aug-21	26-Aug-21	41	3037	\$ 4.07
WEEK 35	8-26	51	3401	8-25	30	3155	8-24	70	2505	8-30	84	2941	8-28	35	3455	20	2871	27-Aug-21	02-Sep-21	54	3091	\$ 4.65
WEEK 36	9-2	36	3437	9-1	65	3220	8-31	62	2567	9-6	78	3019	9-4	70	3525	52	2923	03-Sep-21	09-Sep-21	62	3154	\$ 4.97
WEEK 37	9-9	62	3499	9-8	91	3311	9-7	89	2636	9-13	84	3103	9-11	89	3614	83	3006	10-Sep-21	16-Sep-21	79	3233	\$ 5.52
WEEK 38	9-16	52	3551	9-15	97	3408	9-14	66	2722	9-20	102	3205	9-18	66	3680	76	3082	17-Sep-21	23-Sep-21	81	3313	\$ 4.94
WEEK 39	9-23	49	3600	9-22	58	3466	9-21	46	2768	9-27	112	3317	9-25	76	3756	88	3170	24-Sep-21	30-Sep-21	68	3381	\$ 5.58
WEEK 40	9-30	80	3680	9-29	42	3508	9-28	98	2866	10-04	98	3415	10-02	75	3831	118	3288	01-Oct-21	07-Oct-21	79	3460	\$ 5.71
WEEK 41	10-7	79	3759	10-6	87	3595	10-5	90	2956	10-18	104	3519	10-9	46	3877	81	3369	08-Oct-21	14-Oct-21	81	3541	\$ 5.91
WEEK 42	10-14	77	3836	10-13	51	3646	10-12	81	3037	10-18	87	3606	10-16	49	3926	92	3461	15-Oct-21	21-Oct-21	69	3610	\$ 4.94
WEEK 43	10-21	73	3909	10-20	64	3710	10-19	58	3095	10-25	89	3695	10-23	29	3955	87	3548	22-Oct-21	28-Oct-21	63	3673	\$ 5.68
WEEK 44	10-28	54	3963	10-27	65	3775	10-26	48	3143	11-1	34	3729	10-30	-36	3919	63	3611	29-Oct-21	04-Nov-21	33	3706	
WEEK 45	11-4	54	4017	11-3	15	3790	11-2	65	3208	11-8	3	3732	11-6	8	3927			05-Nov-21	10-Nov-21	29	3735	
WEEK 46	11-11	30	4047	11-10	-18	3772	11-9	39	3247	11-15	-94	3638	11-13	31	3958			12-Nov-21	18-Nov-21	-2	3732	
WEEK 47	11-18	-2	4045	11-17	-46	3726	11-16	-134	3113	11-27	-28	3610	11-20	-18	3940			19-Nov-21	24-Nov-21	-46	3687	
WEEK 48	11-25	-50	3995	11-24	-33	3693	11-23	-59	3054	11-29	-19	3591	11-27	-1	3939			26-Nov-21	02-Dec-21	-32	3654	
WEEK 49	12-2	-42	3953	12-1	2	3695	11-30	-63	2991	12-6	-73	3518	12-4	-91	3848			03-Dec-21	09-Dec-21	-53	3601	
WEEK 50	12-9	-147	3806	12-8	-69	3626	12-7	-77	2914	12-13	-107	3411	12-11	-122	3726			10-Dec-21	16-Dec-21	-104	3497	
WEEK 51	12-16	-209	3597	12-15	-182	3444	12-14	-141	2773	12-20	-161	3250	12-18	-152	3574			17-Dec-21	23-Dec-21	-169	3328	
WEEK 52	12-23	-237	3360	12-22	-112	3332	12-21	-48	2725	12-27	-58	3192	12-25	-114	3460			24-Dec-21	30-Dec-21	-114	3214	

- Revised Value

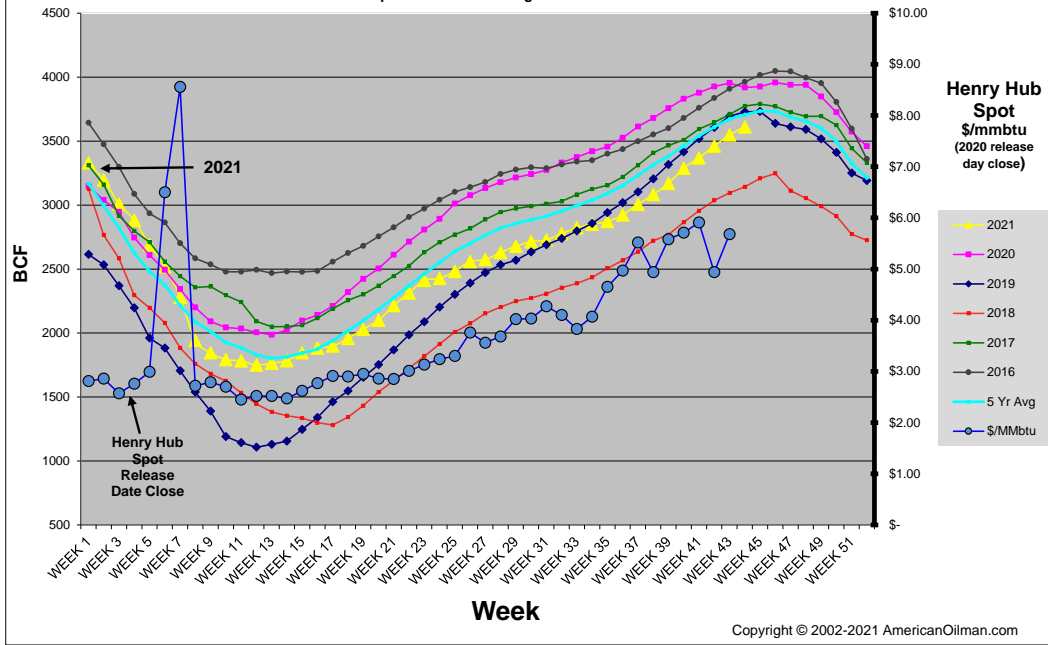
Copyright © 2002-2021 AmericanOilman

**NOTE:** The historical data above is from the Weekly Natural Gas Storage database as reported by the EIA (Energy Information Administration). AmericanOilman compares the weekly values of the current year with the same week values of the previous five years. AmericanOilman does not interpolate the values of past years so that the exact day of each week is compared with the exact day of the current year. This way, you get to see the actual value that was reported for a particular week in the past five years. The EIA uses daily linear interpolations of the working gas inventory values between each reported week (constructing an interpolated value for every day of the year). This is why the EIA "year ago" values, and the "average" values do not match with AmericanOilman's listed values. \*\*\*Since the "Week End" report date loses approximately one day for each additional year, the chart will be corrected by shifting the "Week End" date by one week forward every five years. This is done so the same (approximate) week of the year is compared year to year. The correction week or "Week 0" can be compared to the "before or after" week from the previous year. Years of correction 2014, 2019, 2024, 2029.

### AmericanOilman Natural Gas Weekly Storage 5 yr. Compare

2021

Updated to week ending 10/29/2021



Copyright © 2002-2021 AmericanOilman.com