

AmericanOilman.com 2019

Weekly Natural Gas Storage Report

Updated to week ending 2/8/2019

All years have been updated to EIA estimates for the five-region structure. The five-region structure was introduced Nov. 6, 2015.

AmericanOilman	2014			2015			2016			2017			2018			2019				5 Yr. Avg. Withdrawal or Build	5 Yr. Avg. Storage	Release Date - Closing Gas Price Henry Hub Spot
	Week End	Wdwl / Bld	BCF	Week End	Wdwl / Bld	BCF	Week End	Wdwl / Bld	BCF	Week End	Wdwl / Bld	BCF	Week End	Wdwl / Bld	BCF	Wdwl / Bld	BCF	Week Ending	Data Released			
correction week	12-27	-96	2975													-20	2705	28-Dec-18	04-Jan-19			\$ 2.84
WEEK 1	1-3	-158	2817	1-2	-131	3089	1-1	-113	3643	12-30	-49	3311	12-29	-206	3126	-91	2614	04-Jan-19	10-Jan-19	-131	3197	\$ 2.95
WEEK 2	1-10	-288	2529	1-9	-235	2854	1-8	-168	3475	1-6	-151	3160	1-5	-359	2767	-81	2533	11-Jan-19	17-Jan-19	-240	2957	\$ 3.58
WEEK 3	1-17	-105	2424	1-16	-217	2637	1-15	-178	3297	1-13	-243	2917	1-12	-183	2584	-163	2370	18-Jan-19	24-Jan-19	-185	2772	\$ 3.13
WEEK 4	1-24	-240	2184	1-23	-94	2543	1-22	-211	3086	1-20	-119	2798	1-19	-288	2296	-173	2197	25-Jan-19	31-Jan-19	-190	2581	\$ 2.82
WEEK 5	1-31	-260	1924	1-30	-115	2428	1-29	-152	2934	1-27	-87	2711	1-26	-99	2197	-237	1960	01-Feb-19	07-Feb-19	-143	2439	\$ 2.62
WEEK 6	2-7	-231	1693	2-6	-160	2268	2-5	-70	2864	2-3	-152	2559	2-2	-119	2078	-78	1882	08-Feb-19	14-Feb-19	-146	2292	
WEEK 7	2-14	-249	1444	2-13	-110	2158	2-12	-163	2701	2-10	-114	2445	2-9	-194	1884			15-Feb-19	21-Feb-19	-166	2126	
WEEK 8	2-21	-96	1348	2-20	-220	1938	2-19	-117	2584	2-17	-89	2356	2-16	-124	1760			22-Feb-19	28-Feb-19	-129	1997	
WEEK 9	2-28	-152	1196	2-27	-229	1709	2-26	-48	2536	2-24	7	2363	2-23	-78	1682			01-Mar-19	07-Mar-19	-100	1897	
WEEK 10	3-7	-194	1002	3-6	-198	1511	3-4	-57	2479	3-3	-68	2295	3-2	-57	1625			08-Mar-19	14-Mar-19	-115	1782	
WEEK 11	3-14	-49	953	3-13	-43	1468	3-11	-1	2478	3-10	-53	2242	3-9	-93	1532			15-Mar-19	21-Mar-19	-48	1735	
WEEK 12	3-21	-58	895	3-20	11	1479	3-18	15	2493	3-17	-150	2092	3-16	-86	1446			22-Mar-19	28-Mar-19	-54	1681	
WEEK 13	3-28	-71	824	3-27	-18	1461	3-25	-25	2468	3-24	-43	2049	3-23	-63	1383			29-Mar-19	04-Apr-19	-44	1637	
WEEK 14	4-4	3	827	4-3	15	1476	4-1	12	2480	3-31	2	2051	3-30	-29	1354			05-Apr-19	11-Apr-19	1	1638	
WEEK 15	4-11	23	850	4-10	63	1539	4-8	-3	2477	4-7	10	2061	4-6	-19	1335			12-Apr-19	18-Apr-19	15	1652	
WEEK 16	4-18	49	899	4-17	89	1628	4-15	7	2484	4-14	54	2115	4-13	-36	1299			19-Apr-19	25-Apr-19	33	1685	
WEEK 17	4-25	82	981	4-24	83	1711	4-22	73	2557	4-21	74	2189	4-20	-18	1281			26-Apr-19	02-May-19	59	1744	
WEEK 18	5-2	74	1055	5-1	74	1785	4-29	68	2625	4-28	67	2256	4-27	62	1343			03-May-19	09-May-19	69	1813	
WEEK 19	5-9	105	1160	5-8	112	1897	5-6	56	2681	5-5	45	2301	5-4	89	1432			10-May-19	16-May-19	81	1894	
WEEK 20	5-16	107	1267	5-15	92	1989	5-13	73	2754	5-12	68	2369	5-11	106	1538			17-May-19	23-May-19	89	1983	
WEEK 21	5-23	113	1380	5-22	112	2101	5-20	71	2825	5-19	75	2444	5-18	91	1629			24-May-19	30-May-19	92	2076	
WEEK 22	5-30	119	1499	5-29	132	2233	5-27	82	2907	5-26	81	2525	5-25	96	1725			31-May-19	06-Jun-19	102	2178	
WEEK 23	6-6	108	1607	6-5	111	2344	6-3	65	2972	6-2	106	2631	6-1	92	1817			07-Jun-19	13-Jun-19	96	2274	
WEEK 24	6-13	112	1719	6-12	89	2433	6-10	69	3041	6-09	78	2709	6-08	96	1913			14-Jun-19	20-Jun-19	89	2363	
WEEK 25	6-20	110	1829	6-19	73	2506	6-17	62	3103	6-16	61	2770	6-15	95	2008			21-Jun-19	27-Jun-19	80	2443	
WEEK 26	6-27	99	1928	6-26	73	2579	6-24	37	3140	6-23	46	2816	6-22	66	2074			28-Jun-19	05-Jul-19	64	2507	
WEEK 27	7-4	95	2023	7-3	87	2666	7-1	39	3179	6-30	72	2888	6-29	78	2152			05-Jul-19	11-Jul-19	74	2582	
WEEK 28	7-11	105	2128	7-10	98	2764	7-8	64	3243	7-7	57	2945	7-6	51	2203			12-Jul-19	18-Jul-19	75	2657	
WEEK 29	7-18	91	2219	7-17	59	2823	7-15	34	3277	7-14	28	2973	7-13	46	2249			19-Jul-19	25-Jul-19	52	2708	
WEEK 30	7-25	88	2307	7-24	49	2872	7-22	17	3294	7-21	17	2990	7-20	24	2273			26-Jul-19	01-Aug-19	39	2747	
WEEK 31	8-1	81	2388	7-31	38	2910	7-29	-6	3288	7-28	20	3010	7-27	35	2308			02-Aug-19	08-Aug-19	34	2781	
WEEK 32	8-8	79	2467	8-7	65	2975	8-5	29	3317	8-4	19	3029	8-3	46	2354			09-Aug-19	15-Aug-19	48	2828	
WEEK 33	8-15	88	2555	8-14	52	3027	8-12	22	3339	8-11	53	3082	8-10	33	2387			16-Aug-19	22-Aug-19	50	2878	
WEEK 34	8-22	76	2631	8-21	67	3094	8-19	11	3350	8-18	43	3125	8-17	48	2435			23-Aug-19	29-Aug-19	49	2927	
WEEK 35	8-29	78	2709	8-28	96	3190	8-26	51	3401	8-25	30	3155	8-24	70	2505			30-Aug-19	05-Sep-19	65	2992	
WEEK 36	9-5	92	2801	9-4	72	3262	9-2	36	3437	9-1	65	3220	9-1	62	2567			06-Sep-19	12-Sep-19	65	3057	
WEEK 37	9-12	89	2890	9-11	74	3336	9-9	62	3499	9-8	91	3311	9-7	69	2636			13-Sep-19	19-Sep-19	77	3134	
WEEK 38	9-19	98	2988	9-18	105	3441	9-16	52	3551	9-15	97	3408	9-14	86	2722			20-Sep-19	26-Sep-19	88	3222	
WEEK 39	9-26	111	3099	9-25	96	3537	9-23	49	3600	9-22	58	3466	9-21	46	2768			27-Sep-19	03-Oct-19	72	3294	
WEEK 40	10-3	106	3205	10-2	97	3634	9-30	80	3680	9-29	42	3508	9-28	98	2866			04-Oct-19	10-Oct-19	85	3379	
WEEK 41	10-10	93	3298	10-9	97	3731	10-7	79	3759	10-6	87	3595	10-5	90	2956			11-Oct-19	17-Oct-19	89	3468	
WEEK 42	10-17	95	3393	10-16	82	3813	10-14	77	3836	10-13	51	3646	10-12	81	3037			18-Oct-19	24-Oct-19	77	3545	
WEEK 43	10-24	87	3480	10-23	62	3875	10-21	73	3909	10-20	64	3710	10-19	58	3095			25-Oct-19	31-Oct-19	69	3614	
WEEK 44	10-31	91	3571	10-30	56	3931	10-28	54	3963	10-27	65	3775	10-26	48	3143			01-Nov-19	07-Nov-19	63	3677	
WEEK 45	11-7	40	3611	11-6	54	3985	11-4	54	4017	11-3	15	3790	11-2	65	3208			08-Nov-19	14-Nov-19	46	3722	
WEEK 46	11-14	-17	3594	11-13	15	4000	11-11	30	4047	11-10	-18	3772	11-9	39	3247			15-Nov-19	21-Nov-19	10	3732	
WEEK 47	11-21	-162	3432	11-20	9	4009	11-18	-2	4045	11-17	-46	3726	11-16	-134	3113			22-Nov-19	27-Nov-19	-67	3665	
WEEK 48	11-28	-22	3410	11-27	-53	3956	11-25	-50	3995	11-24	-33	3693	11-23	-59	3054			29-Nov-19	05-Dec-19	-43	3622	
WEEK 49	12-5	-51	3359	12-4	-76	3880	12-2	-42	3953	12-1	2	3695	11-30	-63	2991			06-Dec-19	12-Dec-19	-46	3576	
WEEK 50	12-12	-63	3296	12-11	-34	3846	12-9	-147	3806	12-8	-69	3626	12-7	-77	2914			13-Dec-19	19-Dec-19	-78	3498	
WEEK 51	12-19	-50	3246	12-18	-32	3814	12-16	-209	3597	12-15	-182	3444	12-14	-141	2773			20-Dec-19	27-Dec-19	-123	3375	
WEEK 52	12-26	-26	3220	12-25	-58	3756	12-23	-237	3360	12-22	-112	3332	12-21	-48	2725			27-Dec-19	03-Jan-20	-96	3279	

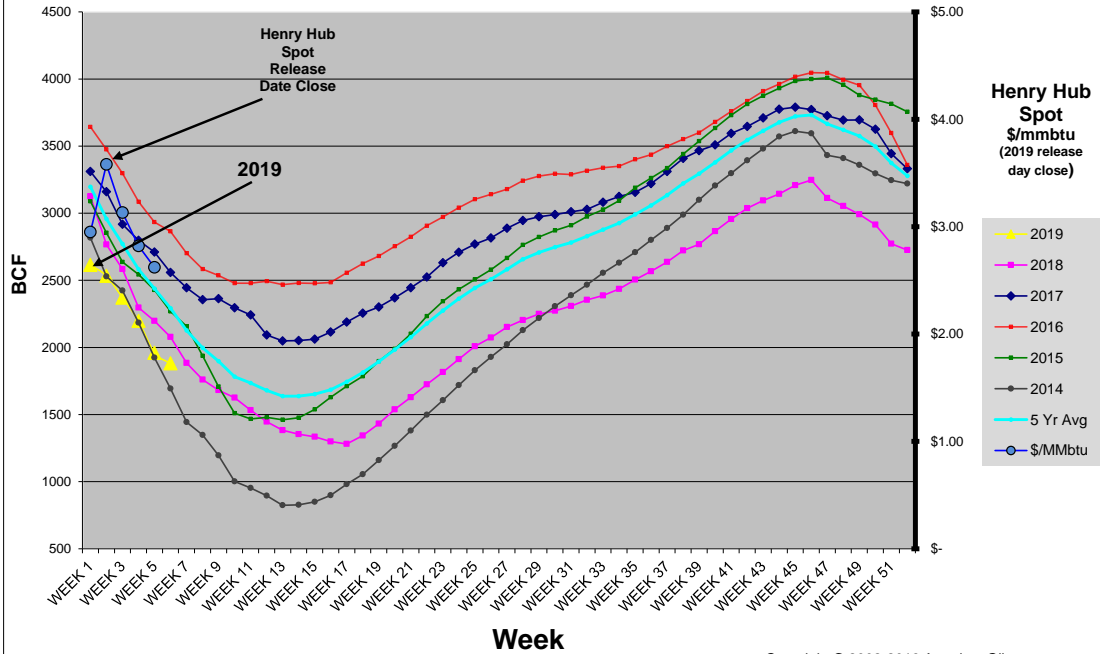
- Revised Value

Copyright © 2002-2019 AmericanOilman

NOTE: The historical data above is from the Weekly Natural Gas Storage database as reported by the EIA (Energy Information Administration). AmericanOilman compares the weekly values of the current year with the same week values of the previous five years. AmericanOilman does not interpolate the values of past years so that the exact day of each week is compared with the exact day of the current year. This way, you get to see the actual value that was reported for a particular week in the past five years. The EIA uses daily linear interpolations of the working gas inventory values between each reported week (constructing an interpolated value for every day of the year). This is why the EIA "year ago" values, and the "average" values do not match with AmericanOilman's listed values. ***Since the "Week End"

AmericanOilman Natural Gas Weekly Storage 5 yr. Compare

2019
Updated to week ending 2/8/2019



Copyright © 2002-2019 AmericanOilman.com