

AmericanOilman.com 2018

Weekly Natural Gas Storage Report

Updated to week ending 11/23/2018

All years have been updated to EIA estimates for the five-region structure. The five-region structure was introduced Nov. 6, 2015.

AmericanOilman	2013			2014			2015			2016			2017			2018		5 Yr. Avg. Withdrawal or Build	5 Yr. Avg. Storage	Release Date - Closing Gas Price Henry Hub Spot		
	Week End	Wdwl / Bld	BCF	Week End	Wdwl / Bld	BCF	Week End	Wdwl / Bld	BCF	Week End	Wdwl / Bld	BCF	Week End	Wdwl / Bld	BCF	Wdwl / Bld	BCF				Week Ending	Data Released
correction week				12-27	-96	2975																
WEEK 1	12-28	-136	3517	1-3	-158	2817	1-2	-131	3089	1-1	-113	3643	12-30	-49	3311	-206	3126	29-Dec-17	04-Jan-18	-117	3275	\$ 4.65
WEEK 2	1-4	-201	3316	1-10	-288	2529	1-9	-235	2854	1-8	-168	3475	1-6	-151	3160	-359	2767	05-Jan-18	11-Jan-18	-209	3067	\$ 3.16
WEEK 3	1-11	-149	3167	1-17	-105	2424	1-16	-217	2637	1-15	-178	3297	1-13	-243	2917	-183	2584	12-Jan-18	18-Jan-18	-178	2888	\$ 3.92
WEEK 4	1-18	-171	2996	1-24	-240	2184	1-23	-94	2543	1-22	-211	3086	1-20	-119	2798	-288	2296	19-Jan-18	25-Jan-18	-167	2721	\$ 3.54
WEEK 5	1-25	-194	2802	1-31	-260	1924	1-30	-115	2428	1-29	-152	2934	1-27	-87	2711	-99	2197	26-Jan-18	01-Feb-18	-162	2560	\$ 3.06
WEEK 6	2-1	-118	2684	2-7	-231	1693	2-6	-160	2268	2-5	-70	2864	2-3	-152	2559	-119	2078	02-Feb-18	08-Feb-18	-146	2414	\$ 2.74
WEEK 7	2-8	-158	2526	2-14	-249	1444	2-13	-110	2158	2-12	-163	2701	2-10	-114	2445	-194	1884	09-Feb-18	15-Feb-18	-159	2255	\$ 2.49
WEEK 8	2-15	-126	2400	2-21	-96	1348	2-20	-220	1938	2-19	-117	2584	2-17	-89	2356	-124	1760	16-Feb-18	22-Feb-18	-130	2125	\$ 2.65
WEEK 9	2-22	-171	2229	2-28	-152	1196	2-27	-229	1709	2-26	-48	2536	2-24	7	2363	-78	1682	23-Feb-18	01-Mar-18	-119	2007	\$ 2.67
WEEK 10	3-1	-147	2082	3-7	-194	1002	3-6	-198	1511	3-4	-57	2479	3-3	-68	2295	-57	1625	02-Mar-18	08-Mar-18	-133	1874	\$ 2.80
WEEK 11	3-8	-144	1938	3-14	-49	953	3-13	-43	1468	3-11	-1	2478	3-10	-53	2242	-93	1532	09-Mar-18	15-Mar-18	-58	1816	\$ 2.70
WEEK 12	3-15	-62	1876	3-21	-58	895	3-20	11	1479	3-18	15	2493	3-17	-150	2092	-86	1446	16-Mar-18	22-Mar-18	-49	1767	\$ 2.62
WEEK 13	3-22	-95	1781	3-28	-71	824	3-27	-18	1461	3-25	-25	2468	3-24	-43	2049	-63	1383	23-Mar-18	29-Mar-18	-50	1717	\$ 2.81
WEEK 14	3-29	-94	1687	4-4	3	827	4-3	15	1476	4-1	12	2480	3-31	2	2051	-29	1354	30-Mar-18	05-Apr-18	-12	1704	\$ 2.81
WEEK 15	4-5	-13	1674	4-11	23	850	4-10	63	1539	4-8	-3	2477	4-7	10	2061	-19	1335	06-Apr-18	12-Apr-18	16	1720	\$ 2.76
WEEK 16	4-12	31	1705	4-18	49	899	4-17	89	1628	4-15	7	2484	4-14	54	2115	-36	1299	13-Apr-18	19-Apr-18	46	1766	\$ 2.80
WEEK 17	4-19	29	1734	4-25	82	981	4-24	83	1711	4-22	73	2557	4-21	74	2189	-18	1281	20-Apr-18	26-Apr-18	68	1834	\$ 2.81
WEEK 18	4-26	42	1776	5-2	74	1055	5-1	74	1785	4-29	68	2625	4-28	67	2566	62	1343	27-Apr-18	03-May-18	65	1899	\$ 2.75
WEEK 19	5-3	90	1866	5-9	105	1160	5-8	112	1897	5-6	56	2681	5-5	45	2301	89	1432	04-May-18	10-May-18	82	1981	\$ 2.75
WEEK 20	5-10	98	1964	5-16	107	1267	5-15	92	1989	5-13	73	2754	5-12	68	2369	106	1538	11-May-18	17-May-18	88	2069	\$ 2.75
WEEK 21	5-17	88	2052	5-23	113	1380	5-22	112	2101	5-20	71	2825	5-19	75	2444	91	1629	18-May-18	24-May-18	92	2160	\$ 2.88
WEEK 22	5-24	90	2142	5-30	119	1499	5-29	132	2233	5-27	82	2907	5-26	81	2525	96	1725	25-May-18	31-May-18	101	2261	\$ 2.94
WEEK 23	5-31	110	2252	6-6	108	1607	6-5	111	2344	6-3	65	2972	6-2	106	2631	92	1817	01-Jun-18	07-Jun-18	100	2361	\$ 3.02
WEEK 24	6-7	95	2347	6-13	112	1719	6-12	89	2433	6-10	69	3041	6-09	78	2709	96	1913	08-Jun-18	14-Jun-18	89	2450	\$ 2.99
WEEK 25	6-14	92	2439	6-20	110	1829	6-19	73	2506	6-17	62	3103	6-16	61	2770	95	2008	15-Jun-18	21-Jun-18	80	2529	\$ 3.08
WEEK 26	6-21	94	2533	6-27	99	1928	6-26	73	2579	6-24	37	3140	6-23	46	2816	66	2074	22-Jun-18	28-Jun-18	70	2599	\$ 2.99
WEEK 27	6-28	73	2606	7-4	95	2023	7-3	87	2666	7-1	39	3179	6-30	72	2888	78	2152	29-Jun-18	06-Jul-18	73	2672	\$ 2.91
WEEK 28	7-5	81	2687	7-11	105	2128	7-10	98	2764	7-8	64	3243	7-7	57	2945	51	2203	06-Jul-18	12-Jul-18	81	2753	\$ 2.89
WEEK 29	7-12	58	2745	7-18	91	2219	7-17	59	2823	7-15	34	3277	7-14	28	2973	46	2249	13-Jul-18	19-Jul-18	54	2807	\$ 2.75
WEEK 30	7-19	41	2786	7-25	88	2307	7-24	49	2872	7-22	17	3294	7-21	17	2990	24	2273	20-Jul-18	26-Jul-18	42	2850	\$ 2.82
WEEK 31	7-26	59	2845	8-1	81	2388	7-31	38	2910	7-29	-6	3288	7-28	20	3010	35	2308	27-Jul-18	02-Aug-18	38	2888	\$ 2.77
WEEK 32	8-2	95	2940	8-8	79	2467	8-7	65	2975	8-5	29	3317	8-4	19	3029	46	2354	03-Aug-18	09-Aug-18	57	2946	\$ 3.02
WEEK 33	8-9	67	3007	8-15	88	2555	8-14	52	3027	8-12	22	3339	8-11	53	3082	33	2387	10-Aug-18	16-Aug-18	56	3002	\$ 3.02
WEEK 34	8-16	56	3063	8-22	76	2631	8-21	67	3094	8-19	11	3350	8-18	43	3125	48	2435	17-Aug-18	23-Aug-18	51	3053	\$ 3.01
WEEK 35	8-23	68	3131	8-29	78	2709	8-28	96	3190	8-26	51	3401	8-25	30	3155	70	2505	24-Aug-18	30-Aug-18	65	3117	\$ 2.96
WEEK 36	8-30	58	3189	9-5	92	2801	9-4	72	3262	9-2	36	3437	9-1	65	3220	62	2567	31-Aug-18	06-Sep-18	65	3182	\$ 2.93
WEEK 37	9-6	64	3253	9-12	89	2890	9-11	74	3336	9-9	62	3499	9-8	91	3311	69	2636	07-Sep-18	13-Sep-18	76	3258	\$ 2.94
WEEK 38	9-13	46	3299	9-19	98	2988	9-18	105	3441	9-16	52	3551	9-15	97	3408	86	2722	14-Sep-18	20-Sep-18	80	3337	\$ 3.07
WEEK 39	9-20	86	3385	9-26	111	3099	9-25	96	3537	9-23	49	3600	9-22	58	3466	46	2768	21-Sep-18	27-Sep-18	80	3417	\$ 3.05
WEEK 40	9-27	102	3487	10-3	106	3205	10-2	97	3634	9-30	80	3680	9-29	42	3508	98	2866	28-Sep-18	04-Oct-18	85	3503	\$ 3.39
WEEK 41	10-4	90	3577	10-10	93	3298	10-9	97	3731	10-7	79	3759	10-6	87	3595	90	2956	05-Oct-18	11-Oct-18	89	3592	\$ 3.16
WEEK 42	10-11	78	3655	10-17	95	3393	10-16	82	3813	10-14	77	3836	10-13	51	3646	81	3037	12-Oct-18	18-Oct-18	77	3669	\$ 3.28
WEEK 43	10-18	86	3741	10-24	87	3480	10-23	62	3875	10-21	73	3909	10-20	64	3710	58	3095	19-Oct-18	25-Oct-18	74	3743	\$ 3.42
WEEK 44	10-25	38	3779	10-31	91	3571	10-30	56	3931	10-28	54	3963	10-27	65	3775	48	3143	26-Oct-18	01-Nov-18	61	3804	\$ 3.36
WEEK 45	11-1	37	3816	11-7	40	3611	11-6	54	3985	11-4	54	4017	11-3	15	3790	65	3208	02-Nov-18	08-Nov-18	40	3844	\$ 3.54
WEEK 46	11-8	18	3834	11-14	-17	3594	11-13	15	4000	11-11	30	4047	11-10	-18	3772	39	3247	09-Nov-18	15-Nov-18	6	3849	\$ 4.69
WEEK 47	11-15	-45	3789	11-21	-162	3432	11-20	9	4009	11-18	-2	4045	11-17	-46	3726	-134	3113	16-Nov-18	21-Nov-17	-49	3800	
WEEK 48	11-22	-14	3775	11-28	-22	3410	11-27	-53	3956	11-25	-50	3995	11-24	-33	3693	-59	3054	23-Nov-18	29-Nov-18	-34	3766	
WEEK 49	11-29	-162	3613	12-5	-51	3359	12-4	-76	3880	12-2	-42	3953	12-1	2	3695			30-Nov-18	06-Dec-18	-66	3700	
WEEK 50	12-6	-80	3533	12-12	-63	3296	12-11	-34	3846	12-9	-147	3806	12-8	-69	3626			07-Dec-18	13-Dec-18	-79	3621	
WEEK 51	12-13	-285	3248	12-19	-50	3246	12-18	-32	3814	12-16	-209	3597	12-15	-182	3444			14-Dec-18	20-Dec-18	-152	3470	
WEEK 52	12-20	-177	3071	12-26	-26	3220	12-25	-58	3756	12-23	-237	3360	12-22	-112	3332			21-Dec-18	28-Dec-18	-122	3348	

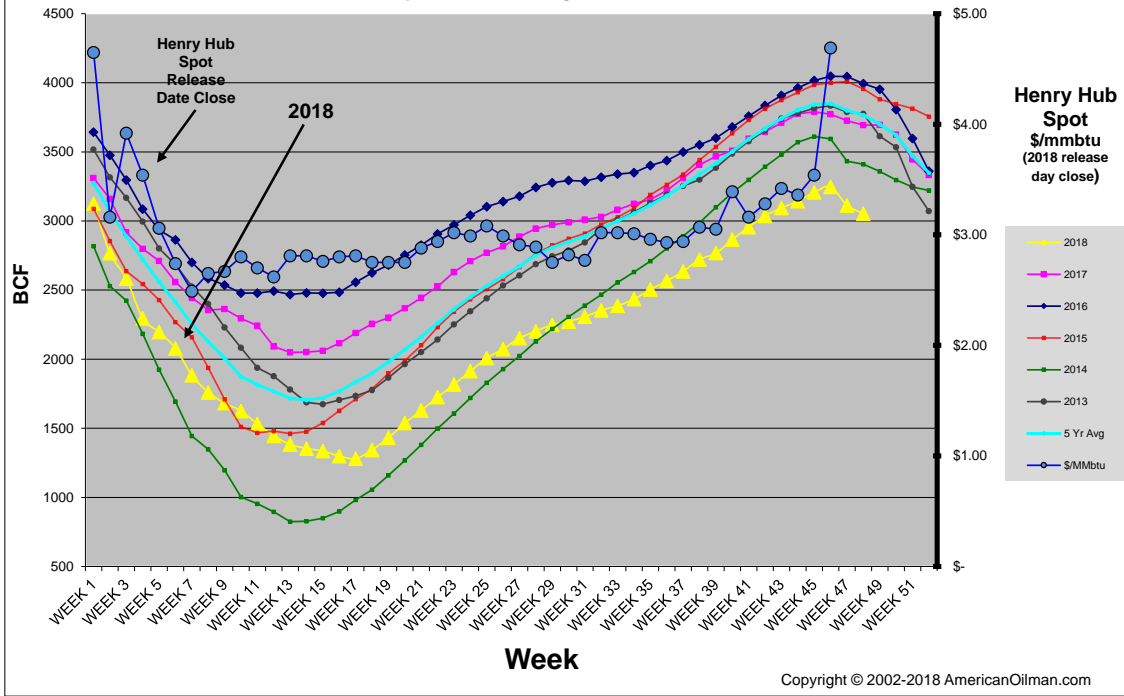
- Revised Value

Copyright © 2002-2018 AmericanOilman

NOTE: The historical data above is from the Weekly Natural Gas Storage database as reported by the EIA (Energy Information Administration). AmericanOilman compares the weekly values of the current year with the same week values of the previous five years. AmericanOilman does not interpolate the values of past years so that the exact day of each week is compared with the exact day of the current year. This way, you get to see the actual value that was reported for a particular week in the past five years. The EIA uses daily linear interpolations of the working gas inventory values between each reported week (constructing an interpolated value for every day of the year). This is why the EIA "year ago" values, and the "average" values do not match with AmericanOilman's listed values. ***Since the "Week End" report date loses approximately one day for each additional year, the chart will be corrected by shifting the "Week End" date by one week forward every five years. This is done

AmericanOilman Natural Gas Weekly Storage 5 yr. Compare

2018
Updated to week ending 11/23/2018



Copyright © 2002-2018 AmericanOilman.com