

AmericanOilman.com 2018

Weekly Natural Gas Storage Report Updated to week ending 1/26/2018

All years have been updated to EIA estimates for the five-region structure. The five-region structure was introduced Nov. 6, 2015.

AmericanOilman	2013			2014			2015			2016			2017			2018				5 Yr. Avg. Withdrawal or Build	5 Yr. Avg. Storage	Release Date - Closing Gas Price Henry Hub Spot
	Week End	Wdwl / Bld	BCF	Week End	Wdwl / Bld	BCF	Week End	Wdwl / Bld	BCF	Week End	Wdwl / Bld	BCF	Week End	Wdwl / Bld	BCF	Wdwl / Bld	BCF	Week Ending	Data Released			
correction week				12-27	-96	2975																
WEEK 1	12-28	-136	3517	1-3	-158	2817	1-2	-131	3089	1-1	-113	3643	12-30	-49	3311	-206	3126	29-Dec-17	04-Jan-18	-117	3275	\$ 4.65
WEEK 2	1-4	-201	3316	1-10	-288	2529	1-9	-235	2854	1-8	-168	3475	1-6	-151	3160	-359	2767	05-Jan-18	11-Jan-18	-209	3067	\$ 3.16
WEEK 3	1-11	-149	3167	1-17	-105	2424	1-16	-217	2637	1-15	-178	3297	1-13	-243	2917	-183	2584	12-Jan-18	18-Jan-18	-178	2888	\$ 3.92
WEEK 4	1-18	-171	2996	1-24	-240	2184	1-23	-94	2543	1-22	-211	3086	1-20	-119	2798	-288	2296	19-Jan-18	25-Jan-18	-167	2721	\$ 3.54
WEEK 5	1-25	-194	2802	1-31	-260	1924	1-30	-115	2428	1-29	-152	2934	1-27	-87	2711	-99	2197	26-Jan-18	01-Feb-18	-162	2560	
WEEK 6	2-1	-118	2684	2-7	-231	1693	2-6	-160	2268	2-5	-70	2864	2-3	-152	2559			02-Feb-18	08-Feb-18	-146	2414	
WEEK 7	2-8	-158	2526	2-14	-249	1444	2-13	-110	2158	2-12	-163	2701	2-10	-114	2445			09-Feb-18	15-Feb-18	-159	2255	
WEEK 8	2-15	-126	2400	2-21	-96	1348	2-20	-220	1938	2-19	-117	2584	2-17	-89	2356			16-Feb-18	22-Feb-18	-130	2125	
WEEK 9	2-22	-171	2229	2-28	-152	1196	2-27	-229	1709	2-26	-48	2536	2-24	7	2363			23-Feb-18	01-Mar-18	-119	2007	
WEEK 10	3-1	-147	2082	3-7	-194	1002	3-6	-198	1511	3-4	-57	2479	3-3	-68	2295			02-Mar-18	08-Mar-18	-133	1874	
WEEK 11	3-8	-144	1938	3-14	-49	953	3-13	-43	1468	3-11	-1	2478	3-10	-53	2242			09-Mar-18	15-Mar-18	-58	1816	
WEEK 12	3-15	-62	1876	3-21	-58	895	3-20	11	1479	3-18	15	2493	3-17	-150	2092			16-Mar-18	22-Mar-18	-49	1767	
WEEK 13	3-22	-95	1781	3-28	-71	824	3-27	-18	1461	3-25	-25	2468	3-24	-43	2049			23-Mar-18	29-Mar-18	-50	1717	
WEEK 14	3-29	-94	1687	4-4	3	827	4-3	15	1476	4-1	12	2480	3-31	2	2051			30-Mar-18	05-Apr-18	-12	1704	
WEEK 15	4-5	-13	1674	4-11	23	850	4-10	63	1539	4-8	-3	2477	4-7	10	2061			06-Apr-18	12-Apr-18	16	1720	
WEEK 16	4-12	31	1705	4-18	49	899	4-17	89	1628	4-15	7	2484	4-14	54	2115			13-Apr-18	19-Apr-18	46	1766	
WEEK 17	4-19	29	1734	4-25	82	981	4-24	83	1711	4-22	73	2557	4-21	74	2189			20-Apr-18	26-Apr-18	68	1834	
WEEK 18	4-26	42	1776	5-2	74	1055	5-1	74	1785	4-29	68	2625	4-28	67	2256			27-Apr-18	03-May-18	65	1899	
WEEK 19	5-3	90	1866	5-9	105	1160	5-8	112	1897	5-6	56	2681	5-5	45	2301			04-May-18	10-May-18	82	1981	
WEEK 20	5-10	98	1964	5-16	107	1267	5-15	92	1989	5-13	73	2754	5-12	68	2369			11-May-18	17-May-18	88	2069	
WEEK 21	5-17	88	2052	5-23	113	1380	5-22	112	2101	5-20	71	2825	5-19	75	2444			18-May-18	24-May-18	92	2160	
WEEK 22	5-24	90	2142	5-30	119	1499	5-29	132	2233	5-27	82	2907	5-26	81	2525			25-May-18	31-May-18	101	2261	
WEEK 23	5-31	110	2252	6-6	108	1607	6-5	111	2344	6-3	65	2972	6-2	106	2631			01-Jun-18	07-Jun-18	100	2361	
WEEK 24	6-7	95	2347	6-13	112	1719	6-12	89	2433	6-10	69	3041	6-09	78	2709			08-Jun-18	14-Jun-18	89	2450	
WEEK 25	6-14	92	2439	6-20	110	1829	6-19	73	2506	6-17	62	3103	6-16	61	2770			15-Jun-18	21-Jun-18	80	2529	
WEEK 26	6-21	94	2533	6-27	99	1928	6-26	73	2579	6-24	37	3140	6-23	46	2816			22-Jun-18	28-Jun-18	70	2599	
WEEK 27	6-28	73	2606	7-4	95	2023	7-3	87	2666	7-1	39	3179	6-30	72	2888			29-Jun-18	06-Jul-18	73	2672	
WEEK 28	7-5	81	2687	7-11	105	2128	7-10	98	2764	7-8	64	3243	7-7	57	2945			06-Jul-18	12-Jul-18	81	2753	
WEEK 29	7-12	58	2745	7-18	91	2219	7-17	59	2823	7-15	34	3277	7-14	28	2973			13-Jul-18	19-Jul-18	54	2807	
WEEK 30	7-19	41	2786	7-25	88	2307	7-24	49	2872	7-22	17	3294	7-21	17	2990			20-Jul-18	26-Jul-18	42	2850	
WEEK 31	7-26	59	2845	8-1	81	2388	7-31	38	2910	7-29	-6	3288	7-28	20	3010			27-Jul-18	02-Aug-18	38	2888	
WEEK 32	8-2	95	2940	8-8	79	2467	8-7	65	2975	8-5	29	3317	8-4	19	3029			03-Aug-18	09-Aug-18	57	2946	
WEEK 33	8-9	67	3007	8-15	88	2555	8-14	52	3027	8-12	22	3339	8-11	53	3082			10-Aug-18	16-Aug-18	56	3002	
WEEK 34	8-16	56	3063	8-22	76	2631	8-21	67	3094	8-19	11	3350	8-18	43	3125			17-Aug-18	23-Aug-18	51	3053	
WEEK 35	8-23	68	3131	8-29	78	2709	8-28	96	3190	8-26	51	3401	8-25	30	3155			24-Aug-18	30-Aug-18	65	3117	
WEEK 36	8-30	58	3189	9-5	92	2801	9-4	72	3262	9-2	36	3437	9-1	65	3220			31-Aug-18	06-Sep-18	65	3182	
WEEK 37	9-6	64	3253	9-12	89	2890	9-11	74	3336	9-9	62	3499	9-8	91	3311			07-Sep-18	13-Sep-18	76	3258	
WEEK 38	9-13	46	3299	9-19	98	2988	9-18	105	3441	9-16	52	3551	9-15	97	3408			14-Sep-18	20-Sep-18	80	3337	
WEEK 39	9-20	86	3385	9-26	111	3099	9-25	96	3537	9-23	49	3600	9-22	58	3466			21-Sep-18	27-Sep-18	80	3417	
WEEK 40	9-27	102	3487	10-3	106	3205	10-2	97	3634	9-30	80	3680	9-29	42	3508			28-Sep-18	04-Oct-18	85	3503	
WEEK 41	10-4	90	3577	10-10	93	3298	10-9	97	3731	10-7	79	3759	10-6	87	3595			05-Oct-18	11-Oct-18	89	3592	
WEEK 42	10-11	78	3655	10-17	95	3393	10-16	82	3813	10-14	77	3836	10-13	51	3646			12-Oct-18	18-Oct-18	77	3669	
WEEK 43	10-18	86	3741	10-24	87	3480	10-23	62	3875	10-21	73	3909	10-20	64	3710			19-Oct-18	25-Oct-18	74	3743	
WEEK 44	10-25	38	3779	10-31	91	3571	10-30	56	3931	10-28	54	3963	10-27	65	3775			26-Oct-18	01-Nov-18	61	3804	
WEEK 45	11-1	37	3816	11-7	40	3611	11-6	54	3985	11-4	54	4017	11-3	15	3790			02-Nov-18	08-Nov-18	40	3844	
WEEK 46	11-8	18	3834	11-14	-17	3594	11-13	15	4000	11-11	30	4047	11-10	-18	3772			09-Nov-18	15-Nov-18	6	3849	
WEEK 47	11-15	-45	3789	11-21	-162	3432	11-20	9	4009	11-18	-2	4045	11-17	-46	3726			16-Nov-18	21-Nov-17	-49	3800	
WEEK 48	11-22	-14	3775	11-28	-22	3410	11-27	-53	3956	11-25	-50	3995	11-24	-33	3693			23-Nov-18	29-Nov-18	-34	3766	
WEEK 49	11-29	-162	3613	12-5	-51	3359	12-4	-76	3880	12-2	-42	3953	12-1	2	3695			30-Nov-18	06-Dec-18	-66	3700	
WEEK 50	12-6	-80	3533	12-12	-63	3296	12-11	-34	3846	12-9	-147	3806	12-8	-69	3626			07-Dec-18	13-Dec-18	-79	3621	
WEEK 51	12-13	-285	3248	12-19	-50	3246	12-18	-32	3814	12-16	-209	3597	12-15	-182	3444			14-Dec-18	20-Dec-18	-152	3470	
WEEK 52	12-20	-177	3071	12-26	-26	3220	12-25	-58	3756	12-23	-237	3360	12-22	-112	3332			21-Dec-18	28-Dec-18	-122	3348	

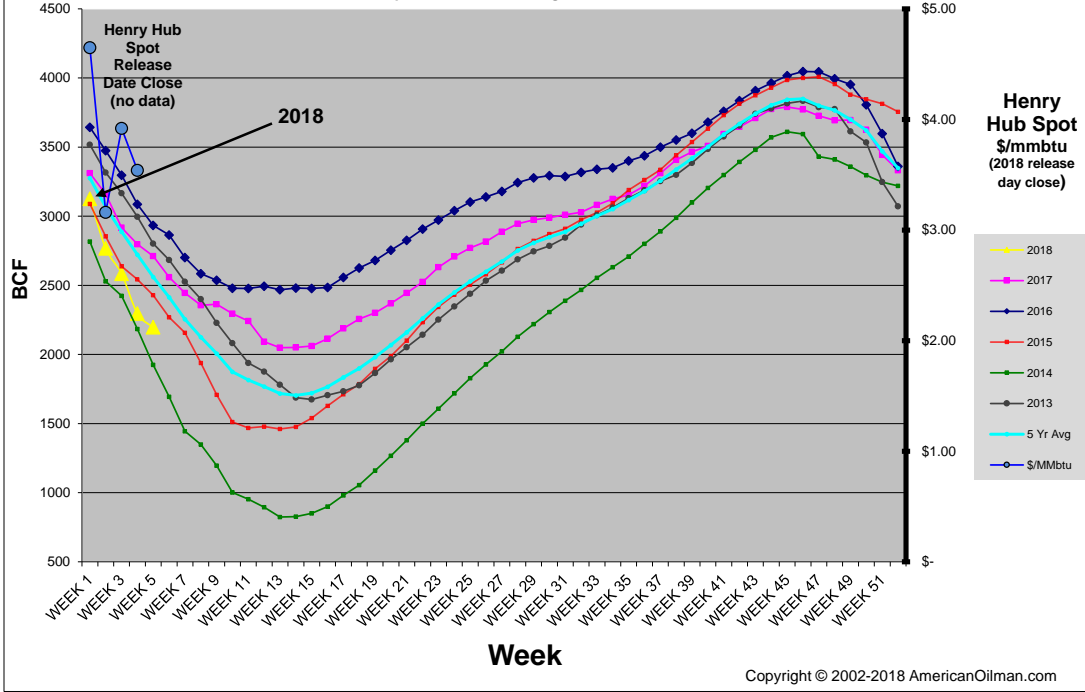
- Revised Value

Copyright © 2002-2018 AmericanOilman

NOTE: The historical data above is from the Weekly Natural Gas Storage database as reported by the EIA (Energy Information Administration). AmericanOilman compares the weekly values of the current year with the same week values of the previous five years. AmericanOilman does not interpolate the values of past years so that the exact day of each week is compared with the exact day of the current year. This way, you get to see the actual value that was reported for a particular week in the past five years. The EIA uses daily linear interpolations of the working gas inventory values between each reported week (constructing an interpolated value for every day of the year). This is why the EIA "year ago" values, and the "average" values do not match with AmericanOilman's listed values. ***Since the "Week End" report date loses approximately one day for each additional year, the chart will be corrected by shifting the "Week End" date by one week forward every five years. This is done so the same (approximate) week of the year is compared year to year. The correction week or "Week 0" can be compared to the "before or after" week from the previous year. Years of correction 2009, 2014, 2019.

AmericanOilman Natural Gas Weekly Storage 5 yr. Compare

2018
Updated to week ending 1/26/2018



Copyright © 2002-2018 AmericanOilman.com