

AmericanOilman.com

2016

Weekly Natural Gas Storage Report

Updated to week ending 9/23/2016

All years have been updated to EIA estimates for the five-region structure. The five-region structure was introduced Nov. 6, 2015.

AmericanOilman	2011			2012			2013			2014			2015			2016		Week Ending	Data Released	5 Yr. Avg. Withdrawal or Build	5 Yr. Avg. Storage	Release Date - Closing Gas Price Henry Hub Spot
	Week End	Wdwl / Bld	BCF	Week End	Wdwl / Bld	BCF	Week End	Wdwl / Bld	BCF	Week End	Wdwl / Bld	BCF	Week End	Wdwl / Bld	BCF	Wdwl / Bld	BCF					
correction week												12-27	-96	2975								
WEEK 1	12-31	-135	3097	12-30	-77	3471	12-28	-136	3517	1-3	-158	2817	1-2	-131	3089	-113	3643	01-Jan-16	07-Jan-16	-127	3198	\$ 2.35
WEEK 2	1-7	-137	2960	1-6	-94	3377	1-4	-201	3316	1-10	-288	2529	1-9	-235	2854	-168	3475	08-Jan-16	14-Jan-16	-191	3007	\$ 2.21
WEEK 3	1-14	-244	2716	1-13	-87	3290	1-11	-149	3167	1-17	-105	2424	1-16	-217	2637	-178	3297	15-Jan-16	21-Jan-16	-160	2847	\$ 2.22
WEEK 4	1-21	-173	2543	1-20	-192	3098	1-18	-171	2996	1-24	-240	2184	1-23	-94	2543	-211	3086	22-Jan-16	28-Jan-16	-174	2673	\$ 2.15
WEEK 5	1-28	-188	2355	1-27	-132	2966	1-25	-194	2802	1-31	-260	1924	1-30	-115	2428	-152	2934	29-Jan-16	04-Feb-16	-178	2495	\$ 2.07
WEEK 6	2-4	-211	2144	2-3	-78	2888	2-1	-118	2684	2-7	-231	1693	2-6	-160	2268	-70	2864	05-Feb-16	11-Feb-16	-160	2335	\$ 2.15
WEEK 7	2-11	-234	1910	2-10	-127	2761	2-8	-158	2526	2-14	-249	1444	2-13	-110	2158	-163	2701	12-Feb-16	18-Feb-16	-176	2160	\$ 1.89
WEEK 8	2-18	-79	1831	2-17	-166	2595	2-15	-126	2400	2-21	-96	1348	2-20	-220	1938	-117	2584	19-Feb-16	25-Feb-16	-137	2022	\$ 1.78
WEEK 9	2-25	-86	1745	2-24	-82	2513	2-22	-171	2229	2-28	-152	1196	2-27	-229	1709	-48	2536	26-Feb-16	03-Mar-16	-144	1878	\$ 1.59
WEEK 10	3-4	-73	1672	3-2	-80	2433	3-1	-147	2082	3-7	-194	1002	3-6	-198	1511	-57	2479	04-Mar-16	10-Mar-16	-138	1740	\$ 1.72
WEEK 11	3-11	-56	1616	3-9	-64	2369	3-8	-144	1938	3-14	-49	953	3-13	-43	1468	-1	2478	11-Mar-16	17-Mar-16	-71	1669	\$ 1.84
WEEK 12	3-18	-5	1611	3-16	11	2380	3-15	-62	1876	3-21	-58	895	3-20	11	1479	15	2493	18-Mar-16	24-Mar-16	-21	1648	\$ 1.78
WEEK 13	3-25	11	1622	3-23	49	2429	3-22	-95	1781	3-28	-71	824	3-27	-18	1461	-25	2468	25-Mar-16	31-Mar-16	-25	1623	\$ 1.98
WEEK 14	4-1	-44	1578	3-30	43	2472	3-29	-94	1687	4-4	3	827	4-3	15	1476	12	2480	01-Apr-16	07-Apr-16	-15	1608	\$ 1.96
WEEK 15	4-8	28	1606	4-6	6	2478	4-5	-13	1674	4-11	23	850	4-10	63	1539	-3	2477	08-Apr-16	14-Apr-16	21	1629	\$ 1.93
WEEK 16	4-15	48	1654	4-13	25	2503	4-12	31	1705	4-18	49	899	4-17	89	1628	7	2484	15-Apr-16	21-Apr-16	48	1678	\$ 1.96
WEEK 17	4-22	31	1685	4-20	43	2546	4-19	29	1734	4-25	82	981	4-24	83	1711	73	2557	22-Apr-16	28-Apr-16	54	1731	\$ 1.88
WEEK 18	4-29	72	1757	4-27	30	2576	4-26	42	1776	5-2	74	1055	5-1	74	1785	68	2625	29-Apr-16	05-May-16	58	1790	\$ 2.05
WEEK 19	5-6	70	1827	5-4	30	2606	5-3	90	1866	5-9	105	1160	5-8	112	1897	56	2681	06-May-16	12-May-16	81	1871	\$ 2.01
WEEK 20	5-13	92	1919	5-11	61	2667	5-10	98	1964	5-16	107	1267	5-15	92	1989	73	2754	13-May-16	19-May-16	90	1961	\$ 1.83
WEEK 21	5-20	104	2023	5-18	77	2744	5-17	88	2052	5-23	113	1380	5-22	112	2101	71	2825	20-May-16	26-May-16	99	2060	\$ 1.77
WEEK 22	5-27	84	2107	5-25	71	2815	5-24	90	2142	5-30	119	1499	5-29	132	2233	82	2907	27-May-16	02-Jun-16	99	2159	\$ 2.32
WEEK 23	6-3	81	2188	6-1	62	2877	5-31	110	2252	6-6	108	1607	6-5	111	2344	65	2972	03-Jun-16	09-Jun-16	94	2254	\$ 2.34
WEEK 24	6-10	69	2257	6-8	67	2944	6-7	95	2347	6-13	112	1719	6-12	89	2433	69	3041	10-Jun-16	16-Jun-16	86	2340	\$ 2.62
WEEK 25	6-17	97	2354	6-15	62	3006	6-14	92	2439	6-20	110	1829	6-19	73	2506	62	3103	17-Jun-16	23-Jun-16	87	2427	\$ 2.69
WEEK 26	6-24	78	2432	6-22	57	3063	6-21	94	2533	6-27	99	1928	6-26	73	2579	37	3140	24-Jun-16	30-Jun-16	80	2507	\$ 2.94
WEEK 27	7-1	94	2526	6-29	39	3102	6-28	73	2606	7-4	95	2023	7-3	87	2666	39	3179	01-Jul-16	07-Jul-16	78	2585	\$ 2.78
WEEK 28	7-8	85	2611	7-6	33	3135	7-5	81	2687	7-11	105	2128	7-10	98	2764	64	3243	08-Jul-16	14-Jul-16	80	2665	\$ 2.79
WEEK 29	7-15	60	2671	7-13	28	3163	7-12	58	2745	7-18	91	2219	7-17	59	2823	34	3277	15-Jul-16	21-Jul-16	59	2724	\$ 2.76
WEEK 30	7-22	43	2714	7-20	27	3190	7-19	41	2786	7-25	88	2307	7-24	49	2872	17	3294	22-Jul-16	28-Jul-16	50	2774	\$ 2.79
WEEK 31	7-29	45	2759	7-27	27	3217	7-26	59	2845	8-1	81	2388	7-31	38	2910	-6	3288	29-Jul-16	04-Aug-16	50	2824	\$ 2.89
WEEK 32	8-5	24	2783	8-3	23	3240	8-2	95	2940	8-8	79	2467	8-7	65	2975	29	3317	05-Aug-16	11-Aug-16	57	2881	\$ 2.88
WEEK 33	8-12	50	2833	8-10	21	3261	8-9	67	3007	8-15	88	2555	8-14	52	3027	22	3339	12-Aug-16	18-Aug-16	56	2937	\$ 2.75
WEEK 34	8-19	73	2906	8-17	47	3308	8-16	56	3063	8-22	76	2631	8-21	67	3094	11	3350	19-Aug-16	25-Aug-16	64	3000	\$ 2.89
WEEK 35	8-26	54	2960	8-24	66	3374	8-23	68	3131	8-29	78	2709	8-28	96	3190	51	3401	26-Aug-16	01-Sep-16	72	3073	\$ 2.95
WEEK 36	9-2	65	3025	8-31	28	3402	8-30	58	3189	9-5	92	2801	9-4	72	3262	36	3437	02-Sep-16	08-Sep-16	63	3136	\$ 2.88
WEEK 37	9-9	85	3110	9-7	27	3429	9-6	64	3253	9-12	89	2890	9-11	74	3336	62	3499	09-Sep-16	15-Sep-16	68	3204	\$ 2.98
WEEK 38	9-16	91	3201	9-14	67	3496	9-13	46	3299	9-19	98	2988	9-18	105	3441	52	3551	16-Sep-16	22-Sep-16	81	3285	\$ 3.18
WEEK 39	9-23	110	3311	9-21	80	3576	9-20	86	3385	9-26	111	3099	9-25	96	3537	49	3600	23-Sep-16	29-Sep-16	97	3382	
WEEK 40	9-30	97	3408	9-28	78	3654	9-27	102	3487	10-3	106	3205	10-2	97	3634			30-Sep-16	06-Oct-16	96	3478	
WEEK 41	10-7	113	3521	10-5	72	3726	10-4	90	3577	10-10	93	3298	10-9	97	3731			07-Oct-16	13-Oct-16	93	3571	
WEEK 42	10-14	103	3624	10-12	50	3776	10-11	78	3655	10-17	95	3393	10-16	82	3813			14-Oct-16	20-Oct-16	82	3652	
WEEK 43	10-21	93	3717	10-19	67	3843	10-18	86	3741	10-24	87	3480	10-23	62	3875			21-Oct-16	27-Oct-16	79	3731	
WEEK 44	10-28	76	3793	10-26	64	3907	10-25	38	3779	10-31	91	3571	10-30	56	3931			28-Oct-16	03-Nov-16	65	3796	
WEEK 45	11-4	37	3830	11-2	21	3928	11-1	37	3816	11-7	40	3611	11-6	54	3985			04-Nov-16	10-Nov-16	38	3834	
WEEK 46	11-11	14	3844	11-9	-18	3910	11-8	18	3834	11-14	-17	3594	11-13	15	4000			11-Nov-16	17-Nov-16	2	3836	
WEEK 47	11-18	9	3853	11-16	-37	3873	11-15	-45	3789	11-21	-162	3432	11-20	9	4009			18-Nov-16	24-Nov-16	-45	3791	
WEEK 48	11-25	-3	3850	11-23	3	3876	11-22	-14	3775	11-28	-22	3410	11-27	-53	3956			25-Nov-16	01-Dec-16	-18	3773	
WEEK 49	12-2	-20	3830	11-30	-72	3804	11-29	-162	3613	12-5	-51	3359	12-4	-76	3880			02-Dec-16	08-Dec-16	-76	3697	
WEEK 50	12-9	-101	3729	12-7	2	3806	12-6	-80	3533	12-12	-63	3296	12-11	-34	3846			09-Dec-16	15-Dec-16	-55	3642	
WEEK 51	12-16	-101	3628	12-14	-82	3724	12-13	-285	3248	12-19	-50	3246	12-18	-32	3814			16-Dec-16	22-Dec-16	-110	3532	
WEEK 52	12-23	-80	3548	12-21	-71	3653	12-20	-177	3071	12-26	-26	3220	12-25	-58	3756			23-Dec-16	29-Dec-16	-82	3450	

- Revised Value

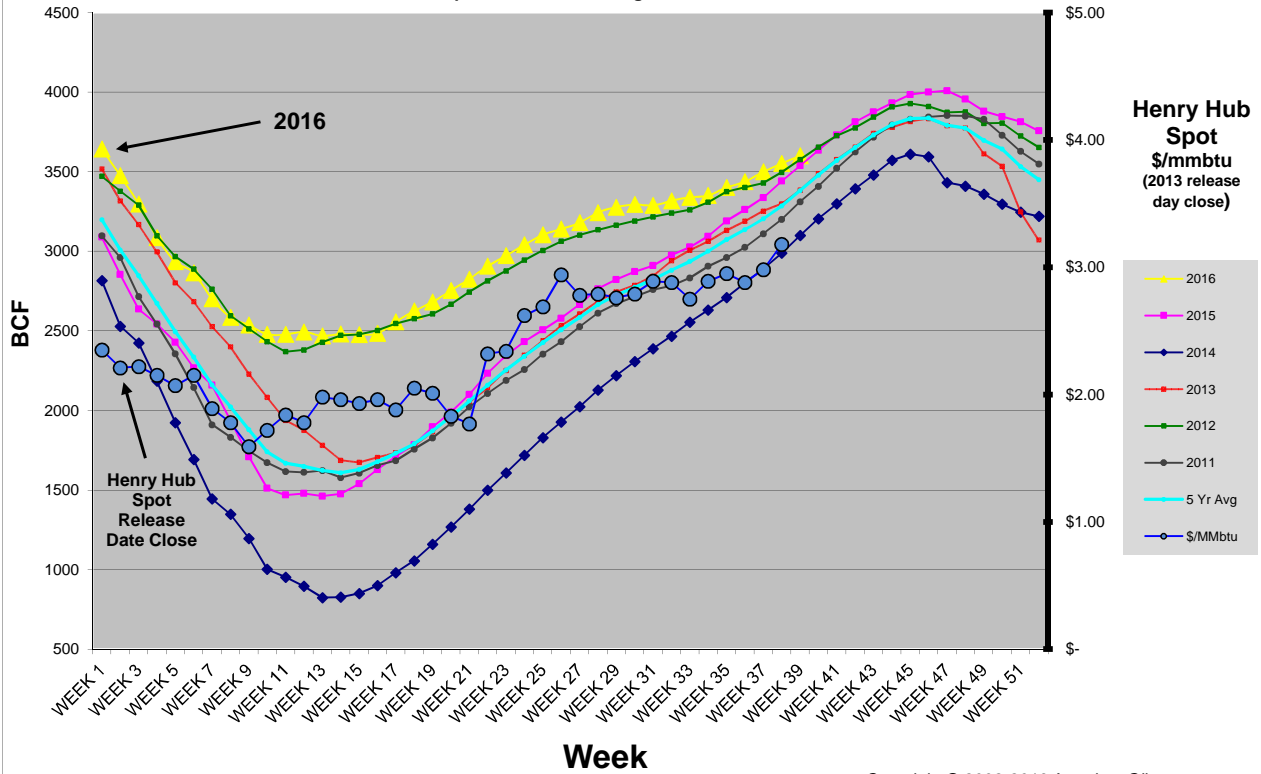
Copyright © 2002-2016 AmericanOilman

NOTE: The historical data above is from the Weekly Natural Gas Storage database as reported by the EIA (Energy Information Administration). AmericanOilman compares the weekly values of the current year with the same week values of the previous five years. AmericanOilman does not interpolate the values of past years so that the exact day of each week is compared with the exact day of the current year. This way, you get to see the actual value that was reported for a particular week in the past five years. The EIA uses daily linear interpolations of the working gas inventory values between each reported week (constructing an interpolated value for every day of the year). This is why the EIA "year ago" values, and the "average" values do not match with AmericanOilman's listed values. ***Since the "Week End" report date loses approximately one day for each additional year, the chart will be corrected by shifting the "Week End" date by one week forward every five years. This is done so the the same (approximate) week of the year is compared year to year. The correction week or "Week 0" can be compared to the "before or after" week from the previous year. Years of correction 2009, 2014, 2019.

AmericanOilman Natural Gas Weekly Storage 5 yr. Compare

2016

Updated to week ending 9-23-2016



Copyright © 2002-2016 AmericanOilman.com