

AmericanOilman.com

2015

Weekly Natural Gas Storage Report

Updated to week ending 10/2/2015

| AmericanOilman | 2010 | | | 2011 | | | 2012 | | | 2013 | | | 2014 | | | 2015 | | Week Ending | Data Released | 5 Yr. Avg. Withdrawal or Build | 5 Yr. Avg. Storage | Release Date - Closing Gas Price Henry Hub Spot |
|----------------|----------|------------|------|----------|------------|------|----------|------------|------|----------|------------|------|----------|------------|------|------------|------|-------------|---------------|--------------------------------|--------------------|---|
| | Week End | Wdwl / Bld | BCF | Week End | Wdwl / Bld | BCF | Week End | Wdwl / Bld | BCF | Week End | Wdwl / Bld | BCF | Week End | Wdwl / Bld | BCF | Wdwl / Bld | BCF | | | | | |
| WEEK 1 | 1-1 | -158 | 3118 | 12-31 | -135 | 3097 | 12-30 | -76 | 3472 | 12-28 | -135 | 3517 | 1-3 | -157 | 2817 | -131 | 3089 | 02-Jan-15 | 08-Jan-15 | -132 | 3204 | \$ 2.92 |
| WEEK 2 | 1-8 | -266 | 2852 | 1-7 | -138 | 2959 | 1-6 | -95 | 3377 | 10-4 | -201 | 3316 | 1-10 | -287 | 2530 | -236 | 2853 | 09-Jan-15 | 15-Jan-15 | -197 | 3007 | \$ 3.32 |
| WEEK 3 | 1-15 | -245 | 2607 | 1-14 | -243 | 2716 | 1-13 | -87 | 3290 | 1-11 | -148 | 3168 | 1-17 | -107 | 2423 | -216 | 2637 | 16-Jan-15 | 22-Jan-15 | -166 | 2841 | \$ 2.95 |
| WEEK 4 | 1-22 | -86 | 2521 | 1-21 | -174 | 2542 | 1-20 | -192 | 3098 | 1-18 | -172 | 2996 | 1-24 | -238 | 2185 | -94 | 2543 | 23-Jan-15 | 29-Jan-15 | -172 | 2668 | \$ 2.88 |
| WEEK 5 | 1-29 | -115 | 2406 | 1-28 | -189 | 2353 | 1-27 | -132 | 2966 | 1-25 | -194 | 2802 | 1-31 | -262 | 1923 | -115 | 2428 | 30-Jan-15 | 05-Feb-15 | -178 | 2490 | \$ 2.66 |
| WEEK 6 | 2-5 | -190 | 2215 | 2-4 | -209 | 2144 | 2-3 | -78 | 2888 | 2-1 | -118 | 2684 | 2-7 | -230 | 1693 | -160 | 2268 | 06-Feb-15 | 12-Feb-15 | -165 | 2325 | \$ 2.86 |
| WEEK 7 | 2-12 | -191 | 2025 | 2-11 | -233 | 1911 | 2-10 | -127 | 2761 | 2-8 | -157 | 2527 | 2-14 | -250 | 1443 | -111 | 2157 | 13-Feb-15 | 19-Feb-15 | -191 | 2133 | \$ 2.92 |
| WEEK 8 | 2-19 | -172 | 1853 | 2-18 | -81 | 1830 | 2-17 | -166 | 2595 | 2-15 | -127 | 2400 | 2-21 | -95 | 1348 | -219 | 1938 | 20-Feb-15 | 26-Feb-15 | -128 | 2005 | \$ 3.21 |
| WEEK 9 | 2-26 | -116 | 1737 | 2-25 | -85 | 1745 | 2-24 | -82 | 2513 | 2-22 | -171 | 2229 | 2-28 | -152 | 1196 | -228 | 1710 | 27-Feb-15 | 05-Mar-15 | -121 | 1884 | \$ 3.27 |
| WEEK 10 | 3-5 | -111 | 1626 | 3-4 | -71 | 1674 | 3-2 | -80 | 2433 | 3-1 | -146 | 2083 | 3-7 | -195 | 1001 | -198 | 1512 | 06-Mar-15 | 12-Mar-15 | -121 | 1763 | \$ 2.82 |
| WEEK 11 | 3-12 | -11 | 1615 | 3-11 | -56 | 1618 | 3-9 | -64 | 2369 | 3-8 | -145 | 1938 | 3-14 | -48 | 953 | -45 | 1467 | 13-Mar-15 | 19-Mar-15 | -65 | 1699 | \$ 2.86 |
| WEEK 12 | 3-19 | 11 | 1626 | 3-18 | -6 | 1612 | 3-16 | 11 | 2380 | 3-15 | -62 | 1876 | 3-21 | -57 | 896 | 12 | 1479 | 20-Mar-15 | 26-Mar-15 | -21 | 1678 | \$ 2.77 |
| WEEK 13 | 3-26 | 12 | 1638 | 3-25 | 12 | 1624 | 3-23 | 57 | 2437 | 3-22 | -95 | 1781 | 3-28 | -74 | 822 | -18 | 1461 | 27-Mar-15 | 02-Apr-15 | -18 | 1660 | \$ 2.63 |
| WEEK 14 | 4-2 | 31 | 1669 | 4-1 | -45 | 1579 | 3-30 | 42 | 2479 | 3-29 | -94 | 1687 | 4-4 | 4 | 826 | 15 | 1476 | 03-Apr-15 | 09-Apr-15 | -12 | 1648 | \$ 2.72 |
| WEEK 15 | 4-9 | 87 | 1756 | 4-8 | 28 | 1607 | 4-6 | 8 | 2487 | 4-5 | -14 | 1673 | 4-11 | 24 | 850 | 63 | 1539 | 10-Apr-15 | 16-Apr-15 | 27 | 1675 | \$ 2.61 |
| WEEK 16 | 4-16 | 73 | 1829 | 4-15 | 47 | 1654 | 4-13 | 14 | 2501 | 4-12 | 31 | 1704 | 4-18 | 49 | 899 | 90 | 1629 | 17-Apr-15 | 23-Apr-15 | 43 | 1717 | \$ 2.59 |
| WEEK 17 | 4-23 | 83 | 1912 | 4-22 | 31 | 1685 | 4-20 | 47 | 2548 | 4-19 | 30 | 1734 | 4-25 | 82 | 981 | 81 | 1710 | 24-Apr-15 | 30-Apr-15 | 55 | 1772 | \$ 2.56 |
| WEEK 18 | 4-30 | 83 | 1995 | 4-29 | 72 | 1757 | 4-27 | 28 | 2576 | 4-26 | 43 | 1777 | 5-2 | 74 | 1055 | 76 | 1786 | 01-May-15 | 07-May-15 | 60 | 1832 | \$ 2.74 |
| WEEK 19 | 5-7 | 94 | 2089 | 5-6 | 70 | 1827 | 5-4 | 30 | 2606 | 5-3 | 88 | 1865 | 5-9 | 105 | 1160 | 111 | 1897 | 08-May-15 | 14-May-15 | 77 | 1909 | \$ 2.87 |
| WEEK 20 | 5-14 | 76 | 2165 | 5-13 | 92 | 1919 | 5-11 | 61 | 2667 | 5-10 | 99 | 1964 | 5-16 | 106 | 1266 | 92 | 1989 | 15-May-15 | 21-May-15 | 87 | 1996 | \$ 2.96 |
| WEEK 21 | 5-21 | 104 | 2269 | 5-20 | 105 | 2024 | 5-18 | 77 | 2744 | 5-17 | 89 | 2053 | 5-23 | 114 | 1380 | 112 | 2101 | 22-May-15 | 28-May-15 | 98 | 2094 | \$ 2.78 |
| WEEK 22 | 5-28 | 88 | 2357 | 5-27 | 83 | 2107 | 5-25 | 71 | 2815 | 5-24 | 88 | 2141 | 5-30 | 119 | 1499 | 132 | 2233 | 29-May-15 | 04-Jun-15 | 90 | 2184 | \$ 2.60 |
| WEEK 23 | 6-4 | 99 | 2456 | 6-3 | 80 | 2187 | 6-1 | 62 | 2877 | 5-31 | 111 | 2252 | 6-6 | 107 | 1606 | 111 | 2344 | 05-Jun-15 | 11-Jun-15 | 92 | 2276 | \$ 2.88 |
| WEEK 24 | 6-11 | 87 | 2543 | 6-10 | 69 | 2256 | 6-8 | 67 | 2944 | 6-7 | 95 | 2347 | 6-13 | 113 | 1719 | 89 | 2433 | 12-Jun-15 | 18-Jun-15 | 86 | 2362 | \$ 2.93 |
| WEEK 25 | 6-18 | 81 | 2624 | 6-17 | 98 | 2354 | 6-15 | 62 | 3006 | 6-14 | 91 | 2438 | 6-20 | 110 | 1829 | 75 | 2508 | 19-Jun-15 | 25-Jun-15 | 88 | 2450 | \$ 2.80 |
| WEEK 26 | 6-25 | 60 | 2684 | 6-24 | 78 | 2432 | 6-22 | 57 | 3063 | 6-21 | 95 | 2533 | 6-27 | 100 | 1929 | 69 | 2577 | 26-Jun-15 | 02-Jul-15 | 78 | 2528 | \$ 2.79 |
| WEEK 27 | 7-2 | 78 | 2762 | 7-1 | 95 | 2527 | 6-29 | 39 | 3102 | 6-28 | 72 | 2605 | 7-4 | 93 | 2022 | 91 | 2668 | 03-Jul-15 | 09-Jul-15 | 75 | 2604 | \$ 2.70 |
| WEEK 28 | 7-9 | 78 | 2840 | 7-8 | 84 | 2611 | 7-6 | 33 | 3135 | 7-5 | 82 | 2687 | 7-11 | 107 | 2129 | 99 | 2767 | 10-Jul-15 | 16-Jul-15 | 77 | 2680 | \$ 2.90 |
| WEEK 29 | 7-16 | 51 | 2891 | 7-15 | 60 | 2671 | 7-13 | 28 | 3163 | 7-12 | 58 | 2745 | 7-18 | 90 | 2219 | 61 | 2828 | 17-Jul-15 | 23-Jul-15 | 57 | 2738 | \$ 2.92 |
| WEEK 30 | 7-23 | 28 | 2919 | 7-22 | 43 | 2714 | 7-20 | 26 | 3189 | 7-19 | 41 | 2786 | 7-25 | 88 | 2307 | 52 | 2880 | 24-Jul-15 | 30-Jul-15 | 45 | 2783 | \$ 2.87 |
| WEEK 31 | 7-30 | 29 | 2948 | 7-29 | 44 | 2758 | 7-27 | 28 | 3217 | 7-26 | 59 | 2845 | 8-1 | 82 | 2389 | 32 | 2912 | 31-Jul-15 | 06-Aug-15 | 48 | 2831 | \$ 2.76 |
| WEEK 32 | 8-6 | 37 | 2985 | 8-5 | 25 | 2783 | 8-3 | 24 | 3241 | 8-2 | 96 | 2941 | 8-8 | 78 | 2467 | 65 | 2977 | 07-Aug-15 | 13-Aug-15 | 52 | 2883 | \$ 2.93 |
| WEEK 33 | 8-13 | 27 | 3012 | 8-12 | 50 | 2833 | 8-10 | 20 | 3261 | 8-9 | 65 | 3006 | 8-15 | 88 | 2555 | 53 | 3030 | 14-Aug-15 | 20-Aug-15 | 50 | 2933 | \$ 2.77 |
| WEEK 34 | 8-20 | 40 | 3052 | 8-19 | 73 | 2906 | 8-17 | 47 | 3308 | 8-16 | 57 | 3063 | 8-22 | 75 | 2630 | 69 | 3099 | 21-Aug-15 | 27-Aug-15 | 58 | 2992 | \$ 2.69 |
| WEEK 35 | 8-27 | 54 | 3106 | 8-26 | 55 | 2961 | 8-24 | 66 | 3374 | 8-23 | 67 | 3130 | 8-29 | 79 | 2709 | 94 | 3193 | 28-Aug-15 | 03-Sep-15 | 64 | 3056 | \$ 2.67 |
| WEEK 36 | 9-3 | 58 | 3164 | 9-2 | 64 | 3025 | 8-31 | 28 | 3402 | 8-30 | 58 | 3188 | 9-5 | 92 | 2801 | 68 | 3261 | 04-Sep-15 | 10-Sep-15 | 60 | 3116 | \$ 2.71 |
| WEEK 37 | 9-10 | 103 | 3267 | 9-9 | 87 | 3112 | 9-7 | 27 | 3429 | 9-6 | 65 | 3253 | 9-12 | 90 | 2891 | 73 | 3334 | 11-Sep-15 | 17-Sep-15 | 74 | 3190 | \$ 2.69 |
| WEEK 38 | 9-17 | 73 | 3340 | 9-16 | 89 | 3201 | 9-14 | 67 | 3496 | 9-13 | 46 | 3299 | 9-19 | 97 | 2988 | 106 | 3440 | 18-Sep-15 | 24-Sep-15 | 74 | 3265 | \$ 2.62 |
| WEEK 39 | 9-24 | 74 | 3414 | 9-23 | 111 | 3312 | 9-21 | 80 | 3576 | 9-20 | 87 | 3386 | 9-26 | 112 | 3100 | 98 | 3538 | 25-Sep-15 | 01-Oct-15 | 93 | 3358 | |
| WEEK 40 | 10-1 | 85 | 3499 | 9-30 | 97 | 3409 | 9-28 | 77 | 3653 | 9-27 | 101 | 3487 | 10-3 | 105 | 3205 | 95 | 3633 | 02-Oct-15 | 08-Oct-15 | 93 | 3451 | |
| WEEK 41 | 10-8 | 91 | 3590 | 10-7 | 112 | 3521 | 10-5 | 72 | 3725 | 10-4 | 90 | 3577 | 10-10 | 94 | 3299 | | | 09-Oct-15 | 15-Oct-15 | 92 | 3542 | |
| WEEK 42 | 10-15 | 93 | 3683 | 10-14 | 103 | 3624 | 10-12 | 51 | 3776 | 10-11 | 77 | 3654 | 10-17 | 94 | 3393 | | | 16-Oct-15 | 22-Oct-15 | 84 | 3626 | |
| WEEK 43 | 10-22 | 71 | 3754 | 10-21 | 92 | 3716 | 10-19 | 67 | 3843 | 10-18 | 87 | 3741 | 10-24 | 87 | 3480 | | | 23-Oct-15 | 29-Oct-15 | 81 | 3707 | |
| WEEK 44 | 10-29 | 67 | 3821 | 10-28 | 78 | 3794 | 10-26 | 65 | 3908 | 10-25 | 38 | 3779 | 10-31 | 91 | 3571 | | | 30-Oct-15 | 05-Nov-15 | 68 | 3775 | |
| WEEK 45 | 11-5 | 19 | 3840 | 11-4 | 37 | 3831 | 11-2 | 21 | 3929 | 11-1 | 35 | 3814 | 11-7 | 40 | 3611 | | | 06-Nov-15 | 12-Nov-15 | 30 | 3805 | |
| WEEK 46 | 11-12 | -5 | 3835 | 11-11 | 19 | 3850 | 11-9 | -18 | 3911 | 11-8 | 20 | 3834 | 11-14 | -17 | 3594 | | | 13-Nov-15 | 19-Nov-15 | 0 | 3805 | |
| WEEK 47 | 11-19 | -7 | 3828 | 11-18 | 2 | 3852 | 11-16 | -38 | 3873 | 11-15 | -45 | 3789 | 11-21 | -162 | 3432 | | | 20-Nov-15 | 26-Nov-15 | -50 | 3755 | |
| WEEK 48 | 11-26 | -23 | 3805 | 11-25 | -1 | 3851 | 11-23 | 4 | 3877 | 11-22 | -13 | 3776 | 11-28 | -22 | 3410 | | | 27-Nov-15 | 03-Dec-15 | -11 | 3744 | |
| WEEK 49 | 12-3 | -89 | 3716 | 12-2 | -20 | 3831 | 11-30 | -73 | 3804 | 11-29 | -162 | 3614 | 12-5 | -51 | 3359 | | | 04-Dec-15 | 10-Dec-15 | -79 | 3665 | |
| WEEK 50 | 12-10 | -164 | 3552 | 12-9 | -102 | 3729 | 12-7 | 2 | 3806 | 12-6 | -81 | 3533 | 12-12 | -64 | 3295 | | | 11-Dec-15 | 17-Dec-15 | -82 | 3583 | |
| WEEK 51 | 12-17 | -184 | 3368 | 12-16 | -100 | 3629 | 12-14 | -82 | 3724 | 12-13 | -285 | 3248 | 12-19 | -49 | 3246 | | | 18-Dec-15 | 24-Dec-15 | -140 | 3443 | |
| WEEK 52 | 12-24 | -136 | 3232 | 12-23 | -81 | 3548 | 12-21 | -72 | 3652 | 12-20 | -177 | 3071 | 12-26 | -26 | 3220 | | | 25-Dec-15 | 31-Dec-15 | -98 | 3345 | |

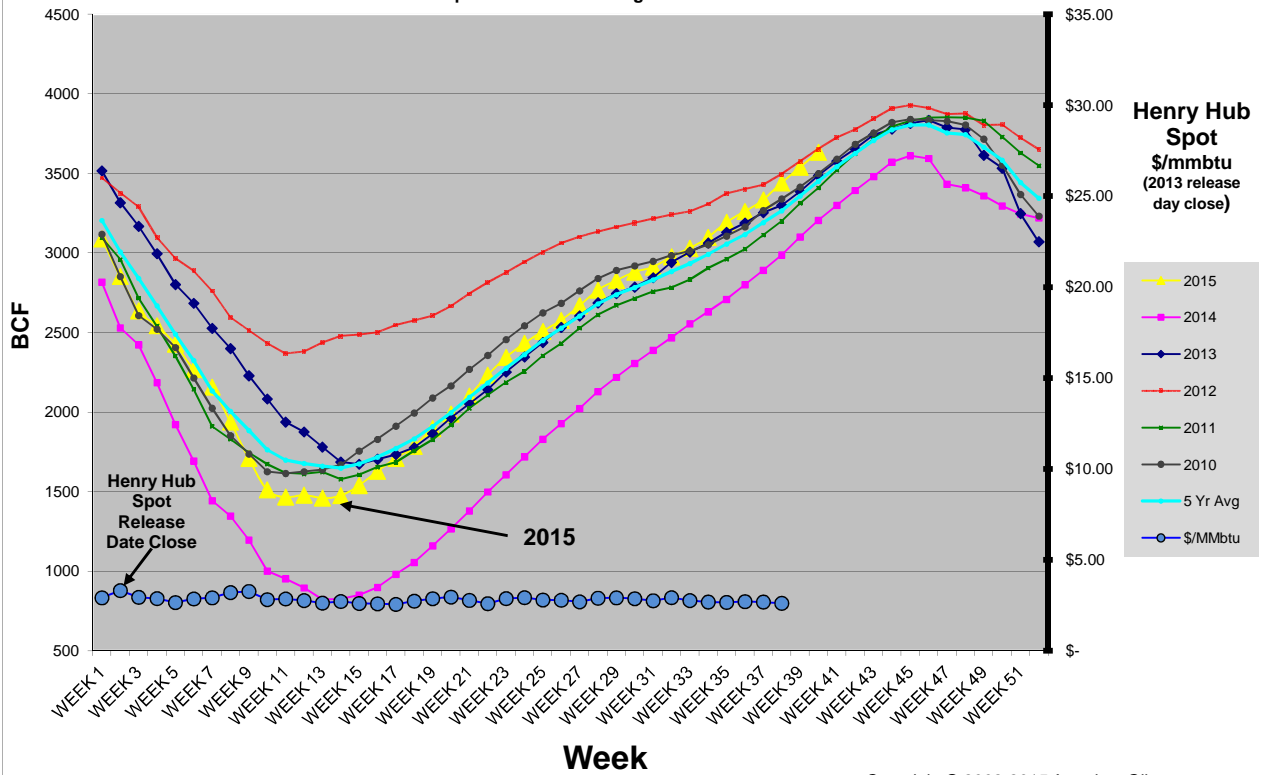
- Revised Value

Copyright © 2002-2015 AmericanOilman

NOTE: The historical data above is from the Weekly Natural Gas Storage database as reported by the EIA (Energy Information Administration). AmericanOilman compares the weekly values of the current year with the same week values of the previous five years. AmericanOilman does not interpolate the values of past years so that the exact day of each week is compared with the exact day of the current year. This way, you get to see the actual value that was reported for a particular week in the past five years. The EIA uses daily linear interpolations of the working gas inventory values between each reported week (constructing an interpolated value for every day of the year). This is why the EIA "year ago" values, and the "average" values do not match with AmericanOilman's listed values. ***Since the "Week End" report date loses approximately one day for each additional year, the chart will be corrected by shifting the "Week End" date by one week forward every five years. This is done so the the same (approximate) week of the year is compared year to year. The correction week or "Week 0" can be compared to the "before or after" week from the previous year. Years of correction 2009, 2014, 2019.

AmericanOilman Natural Gas Weekly Storage 5 yr. Compare

2015
Updated to week ending 10-2-2015



Copyright © 2002-2015 AmericanOilman.com