

# AmericanOilman.com

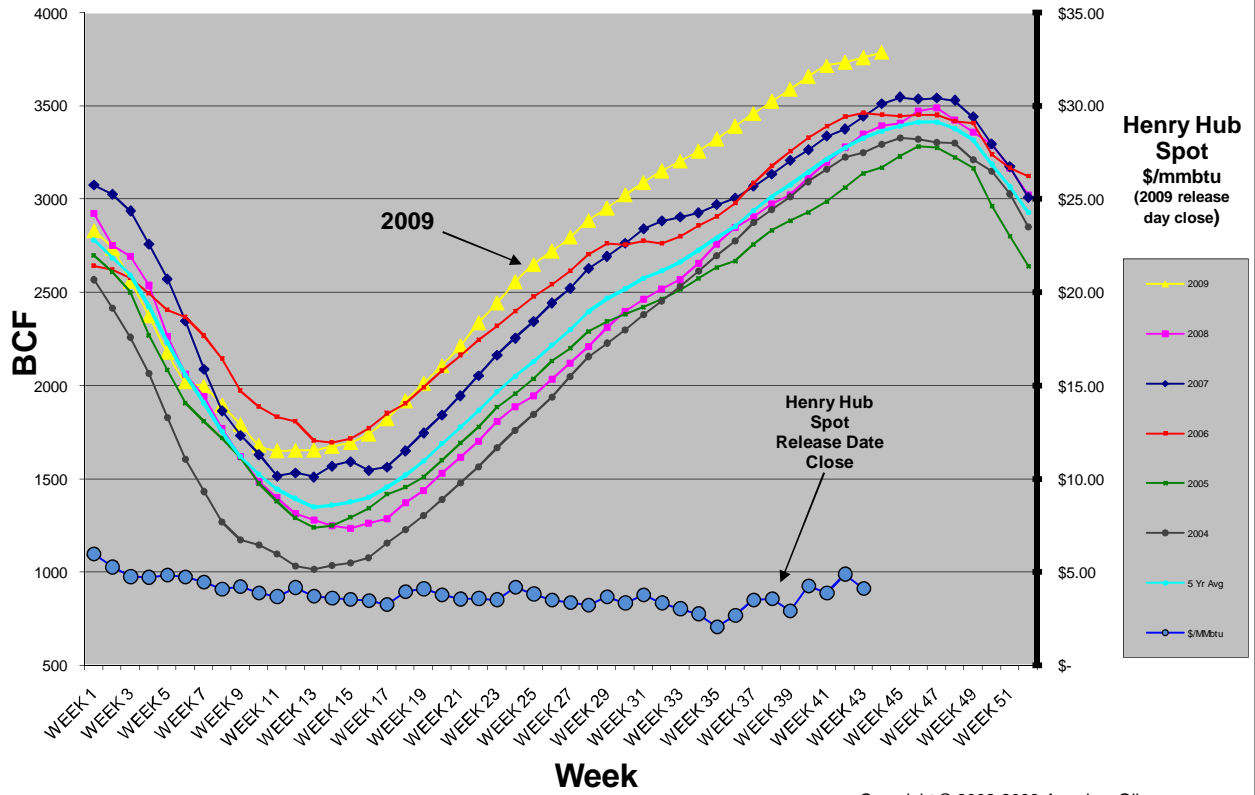
## Weekly Natural Gas Storage Report

Updated to week ending 10/30/2009

AmericanOilman	2004			2005			2006			2007			2008			2009		Week Ending	Data Released	5 Yr. Avg. Withdrawal or Build	5 Yr. Avg. Storage	Release Date - Closing Gas Price Henry Hub Spot
	Week End	Wdwl / Bld	BCF	Week End	Wdwl / Bld	BCF	Week End	Wdwl / Bld	BCF	Week End	Wdwl / Bld	BCF	Week End	Wdwl / Bld	BCF	Wdwl / Bld	BCF					
Note: Week "0" below is a correction week to account for shift in comparison week ending date - (less one day each year)																						
WEEK 0	12-24	-178	2849	12-23	-162	2640	12-22	-46	3121	12-21	-165	3008	12-19	-147	3020	-143	2877	26-Dec-08	31-Dec-08	-140	2928	\$ 5.63
WEEK 1	1-2	-52	2567	12-31	-151	2698	12-30	1	2641	12-29	-47	3074	12-28	-87	2921	-47	2830	02-Jan-09	08-Jan-09	-67	2780	\$ 5.96
WEEK 2	1-9	-153	2414	1-7	-88	2610	1-6	-20	2621	1-5	-49	3025	1-4	-171	2750	-94	2736	09-Jan-09	15-Jan-09	-96	2684	\$ 5.26
WEEK 3	1-16	-156	2258	1-14	-110	2500	1-13	-46	2575	1-12	-89	2936	1-11	-59	2691	-176	2560	16-Jan-09	23-Jan-09	-92	2592	\$ 4.75
WEEK 4	1-23	-195	2063	1-21	-230	2270	1-20	-81	2494	1-19	-179	2757	1-18	-155	2536	-186	2374	23-Jan-09	29-Jan-09	-168	2424	\$ 4.71
WEEK 5	1-30	-236	1827	1-28	-177	2083	1-27	-88	2406	1-26	-186	2571	1-25	-274	2262	-195	2179	30-Jan-09	05-Feb-09	-194	2230	\$ 4.84
WEEK 6	2-6	-224	1603	2-4	-187	1906	2-3	-38	2368	2-2	-224	2347	2-1	-200	2062	-159	2020	06-Feb-09	12-Feb-09	-173	2057	\$ 4.73
WEEK 7	2-13	-172	1431	2-11	-98	1808	2-10	-102	2266	2-9	-259	2088	2-8	-120	1942	-24	1996	13-Feb-09	19-Feb-09	-150	1907	\$ 4.45
WEEK 8	2-20	-164	1267	2-18	-88	1720	2-17	-123	2143	2-16	-223	1865	2-15	-172	1770	-101	1895	20-Feb-09	26-Feb-09	-154	1753	\$ 4.08
WEEK 9	2-27	-96	1171	2-25	-107	1613	2-24	-171	1972	2-23	-132	1733	2-22	-151	1619	-102	1793	27-Feb-09	05-Mar-09	-131	1622	\$ 4.21
WEEK 10	3-5	-28	1143	3-4	-139	1474	3-3	-85	1887	3-2	-102	1631	2-29	-135	1484	-112	1681	06-Mar-09	12-Mar-09	-98	1524	\$ 3.87
WEEK 11	3-12	-46	1097	3-11	-95	1379	3-10	-55	1832	3-9	-115	1516	3-7	-86	1398	-30	1651	13-Mar-09	19-Mar-09	-79	1444	\$ 3.68
WEEK 12	3-19	-65	1032	3-18	-89	1290	3-17	-23	1809	3-16	17	1533	3-14	-85	1313	3	1654	20-Mar-09	26-Mar-09	-49	1395	\$ 4.16
WEEK 13	3-26	-18	1014	3-25	-51	1239	3-24	-104	1705	3-23	-22	1511	3-21	-36	1277	0	1654	27-Mar-09	02-Apr-09	-46	1349	\$ 3.69
WEEK 14	4-2	20	1034	4-1	10	1249	3-31	-10	1695	3-30	58	1569	3-28	-29	1248	20	1674	03-Apr-09	09-Apr-09	10	1359	\$ 3.59
WEEK 15	4-09	15	1049	4-8	44	1293	4-7	19	1714	4-7	23	1592	4-4	-14	1234	21	1695	10-Apr-09	16-Apr-09	17	1376	\$ 3.54
WEEK 16	4-16	28	1077	4-15	50	1343	4-14	57	1771	4-13	-46	1546	4-11	27	1261	46	1741	17-Apr-09	23-Apr-09	23	1400	\$ 3.46
WEEK 17	4-23	78	1155	4-22	73	1416	4-21	80	1851	4-20	18	1564	4-18	24	1285	82	1823	24-Apr-09	30-Apr-09	55	1454	\$ 3.25
WEEK 18	4-30	72	1227	4-29	39	1455	4-28	53	1904	4-27	87	1651	4-25	86	1371	95	1918	01-May-09	07-May-09	67	1522	\$ 3.95
WEEK 19	5-7	76	1303	5-6	54	1509	5-5	85	1989	5-4	96	1747	5-2	65	1436	95	2013	08-May-09	14-May-09	75	1597	\$ 4.10
WEEK 20	5-14	85	1388	5-13	90	1599	5-12	91	2080	5-11	95	1842	5-9	93	1529	94	2107	15-May-09	21-May-09	91	1688	\$ 3.77
WEEK 21	5-21	89	1477	5-20	93	1692	5-19	83	2163	5-18	104	1946	5-16	85	1614	106	2213	22-May-09	28-May-09	91	1778	\$ 3.55
WEEK 22	5-28	87	1564	5-27	86	1778	5-26	80	2243	5-25	107	2053	5-23	87	1701	124	2337	29-May-09	04-Jun-09	89	1868	\$ 3.58
WEEK 23	6-4	102	1666	6-3	105	1883	6-2	77	2320	6-1	110	2163	5-30	105	1806	106	2443	05-Jun-09	11-Jun-09	100	1968	\$ 3.51
WEEK 24	6-11	94	1760	6-10	73	1956	6-9	77	2397	6-8	92	2255	6-6	80	1886	114	2557	12-Jun-09	18-Jun-09	83	2051	\$ 4.19
WEEK 25	6-18	85	1845	6-17	80	2036	6-16	79	2476	15	89	2344	6-13	57	1943	94	2651	19-Jun-09	25-Jun-09	78	2129	\$ 3.82
WEEK 26	6-25	93	1938	6-24	97	2133	6-23	66	2542	6-22	99	2443	6-20	90	2033	70	2721	26-Jun-09	02-Jul-09	89	2218	\$ 3.49
WEEK 27	7-2	109	2047	7-1	66	2199	6-30	73	2615	6-29	78	2521	6-27	85	2118	75	2796	03-Jul-09	09-Jul-09	82	2300	\$ 3.36
WEEK 28	7-9	108	2155	7-8	92	2291	7-7	89	2704	7-6	106	2627	7-4	90	2208	90	2886	10-Jul-09	16-Jul-09	97	2397	\$ 3.21
WEEK 29	7-16	72	2227	7-15	53	2344	7-14	59	2763	7-13	65	2692	7-11	104	2312	66	2952	17-Jul-09	23-Jul-09	71	2468	\$ 3.66
WEEK 30	7-23	70	2297	7-22	39	2383	7-21	-7	2756	7-20	71	2763	7-18	84	2396	71	3023	24-Jul-09	30-Jul-09	51	2519	\$ 3.34
WEEK 31	7-30	83	2380	7-29	37	2420	7-28	19	2775	7-27	77	2840	7-25	65	2461	66	3089	31-Jul-09	06-Aug-09	56	2575	\$ 3.78
WEEK 32	8-6	72	2452	8-5	43	2463	8-4	-12	2763	8-3	42	2882	8-1	56	2517	63	3152	07-Aug-09	13-Aug-09	40	2615	\$ 3.34
WEEK 33	8-13	78	2530	8-12	52	2515	8-11	37	2800	8-10	21	2903	8-8	50	2567	52	3204	14-Aug-09	20-Aug-09	48	2663	\$ 3.03
WEEK 34	8-20	84	2614	8-19	60	2575	8-18	57	2857	8-17	23	2926	8-15	88	2655	54	3258	21-Aug-09	27-Aug-09	62	2725	\$ 2.76
WEEK 35	8-27	81	2695	8-26	58	2633	8-25	48	2905	8-24	43	2969	8-22	102	2757	65	3323	28-Aug-09	03-Sep-09	66	2792	\$ 2.06
WEEK 36	9-3	80	2775	9-2	36	2669	9-1	71	2976	8-31	36	3005	8-29	90	2847	69	3392	04-Sep-09	10-Sep-09	63	2854	\$ 2.68
WEEK 37	9-10	99	2874	9-9	89	2758	9-8	108	3084	9-7	64	3069	9-5	58	2905	66	3458	11-Sep-09	17-Sep-09	84	2938	\$ 3.50
WEEK 38	9-17	68	2942	9-16	74	2832	9-15	93	3177	9-14	63	3132	9-12	67	2972	67	3525	18-Sep-09	24-Sep-09	73	3011	\$ 3.56
WEEK 39	9-24	69	3011	9-23	53	2885	9-22	77	3254	9-21	74	3206	9-19	51	3023	64	3589	25-Sep-09	01-Oct-09	65	3076	\$ 2.91
WEEK 40	10-2	81	3092	9-30	44	2929	9-29	73	3327	9-28	57	3263	9-26	87	3110	69	3658	02-Oct-09	08-Oct-09	68	3144	\$ 4.24
WEEK 41	10-8	67	3159	10-7	58	2987	10-6	62	3389	10-5	73	3336	10-3	88	3198	58	3716	09-Oct-09	15-Oct-09	70	3214	\$ 3.88
WEEK 42	10-15	64	3223	10-14	75	3062	10-13	53	3442	10-12	39	3375	10-10	79	3277	18	3734	16-Oct-09	22-Oct-09	62	3276	\$ 4.88
WEEK 43	10-22	26	3249	10-21	77	3139	10-20	19	3461	10-19	68	3443	10-17	70	3347	25	3759	23-Oct-09	29-Oct-09	52	3328	\$ 4.11
WEEK 44	10-29	44	3293	10-28	29	3168	10-27	-9	3452	10-26	66	3509	10-24	46	3393	29	3788	30-Oct-09	05-Nov-09	35	3363	
WEEK 45	11-5	34	3327	11-4	61	3229	11-3	-7	3445	11-2	36	3545	10-31	12	3405			06-Nov-09	13-Nov-09	27	3390	
WEEK 46	11-12	-6	3321	11-11	53	3282	11-10	5	3450	11-9	-9	3536	11-7	67	3472			13-Nov-09	19-Nov-09	22	3412	
WEEK 47	11-19	-17	3304	11-18	-8	3274	11-17	-1	3449	11-16	4	3540	11-14	16	3488			20-Nov-09	25-Nov-09	-1	3411	
WEEK 48	11-26	-5	3299	11-25	-49	3225	11-24	-32	3417	11-23	-12	3528	11-21	-66	3422			27-Nov-09	03-Dec-09	-33	3378	
WEEK 49	12-03	-88	3211	12-02	-59	3166	12-1	-11	3406	11-30	-88	3440	11-28	-64	3358			04-Dec-09	10-Dec-09	-62	3316	
WEEK 50	12-10	-61	3150	12-9	-202	2964	12-8	-168	3238	12-7	-146	3294	12-5	-67	3291			11-Dec-09	17-Dec-09	-129	3187	
WEEK 51	12-17	-123	3027	12-16	-162	2802	12-15	-71	3167	12-14	-121	3173	12-12	-124	3167			18-Dec-09	24-Dec-0			

# AmericanOilman Natural Gas Weekly Storage 5 yr. Compare

Updated to week ending 10-30-2009



Copyright © 2002-2009 AmericanOilman.com